

## Product datasheet for **TA316835**

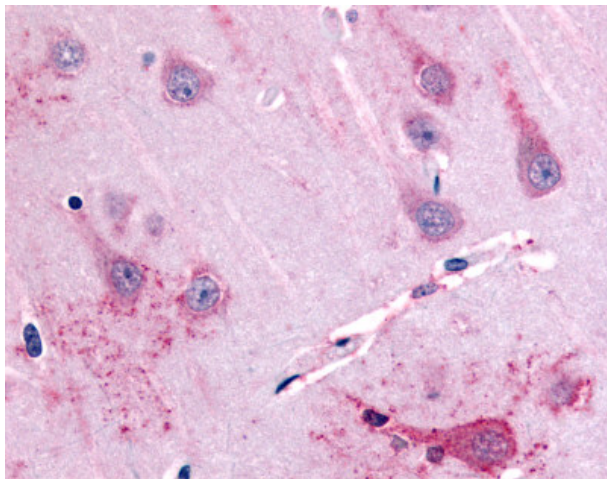
### GPR39 Rabbit Polyclonal Antibody

#### Product data:

Product Type:	Primary Antibodies
Applications:	IHC
Recommended Dilution:	IHC-P (5 µg/ml)
Reactivity:	Gorilla, Human
Host:	Rabbit
Isotype:	IgG
Clonality:	Polyclonal
Immunogen:	GPR39 antibody was raised against synthetic 20 amino acid peptide from C-terminus of human GPR39. Percent identity with other species by BLAST analysis: Human, Gorilla (100%); Gibbon (95%); Marmoset (85%).
Formulation:	PBS, 0.1% sodium azide.
Concentration:	lot specific
Purification:	Immunoaffinity Chromatography
Conjugation:	Unconjugated
Storage:	Store at -20°C as received.
Stability:	Stable for 12 months from date of receipt.
Gene Name:	G protein-coupled receptor 39
Database Link:	<a href="#">NP_001499</a> <a href="#">Entrez Gene 2863 Human</a> <a href="#">O43194</a>
Synonyms:	MGC149541
Note:	Specific for Human GPR39. BLAST analysis of the peptide immunogen showed no homology with other human proteins.
Protein Families:	Druggable Genome, GPCR, Transmembrane



[View online »](#)

**Product images:**

Anti-GPR39 antibody IHC of human hippocampus, neurons of area ca1. Immunohistochemistry of formalin-fixed, paraffin-embedded tissue after heat-induced antigen retrieval.