

Product datasheet for **TA316832**

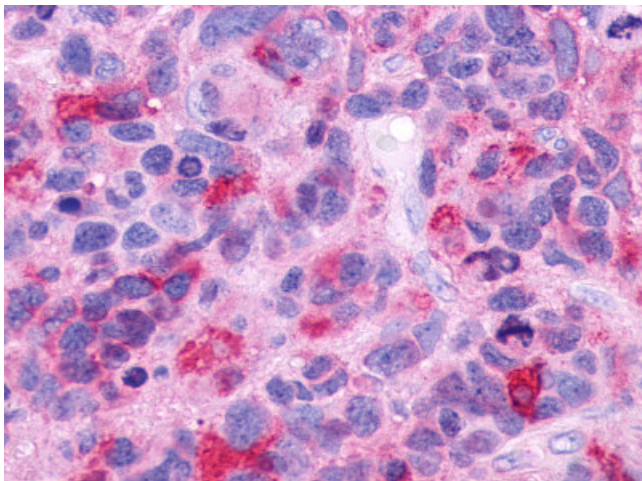
GPR39 Rabbit Polyclonal Antibody

Product data:

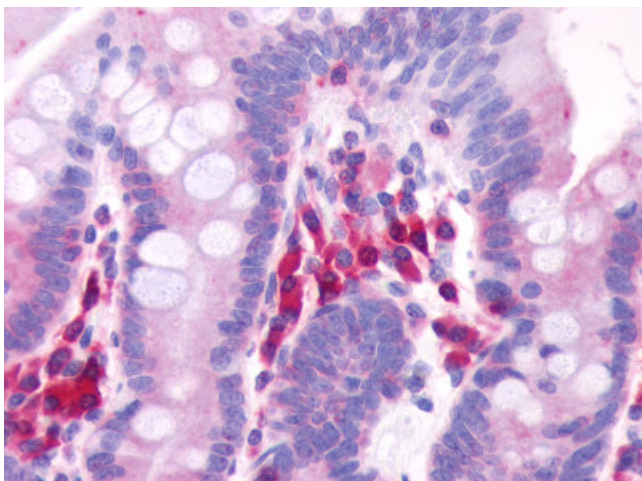
Product Type:	Primary Antibodies
Applications:	IHC
Recommended Dilution:	IHC-P (1.25 - 2.5 µg/ml)
Reactivity:	Gorilla, Human, Mouse, Rabbit, Rat, Gibbon, Horse (Predicted: Monkey, Bovine, Chicken)
Host:	Rabbit
Isotype:	IgG
Clonality:	Polyclonal
Immunogen:	GPR39 antibody was raised against synthetic 16 amino acid peptide from 3rd extracellular domain of human GPR39. Percent identity with other species by BLAST analysis: Human, Gorilla, Gibbon, Mouse, Rat, Horse, Rabbit (100%); Marmoset, Bovine, Panda, Turkey, Chicken (94%); Pig, Opossum (88%); Dog (81%).
Formulation:	PBS, 0.1% sodium azide.
Concentration:	lot specific
Purification:	Immunoaffinity Chromatography
Conjugation:	Unconjugated
Storage:	Store at -20°C as received.
Stability:	Stable for 12 months from date of receipt.
Gene Name:	G protein-coupled receptor 39
Database Link:	NP_001499 Entrez Gene 71111 Mouse Entrez Gene 288995 Rat Entrez Gene 720610 Monkey Entrez Gene 2863 Human O43194
Synonyms:	MGC149541
Note:	Specific for Human GPR39. BLAST analysis of the peptide immunogen showed no homology with other human proteins.
Protein Families:	Druggable Genome, GPCR, Transmembrane



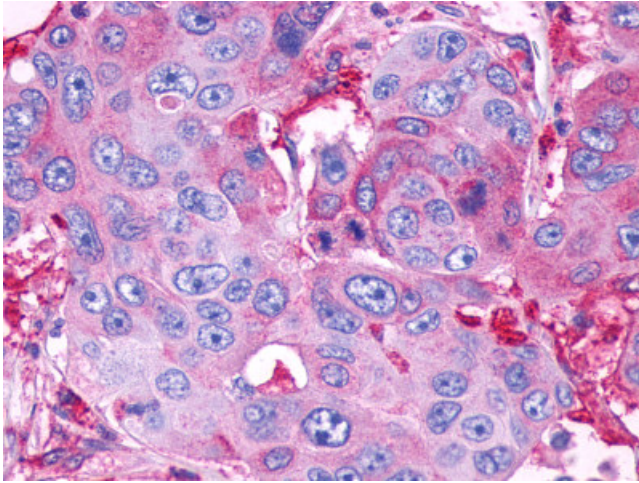
[View online »](#)

Product images:

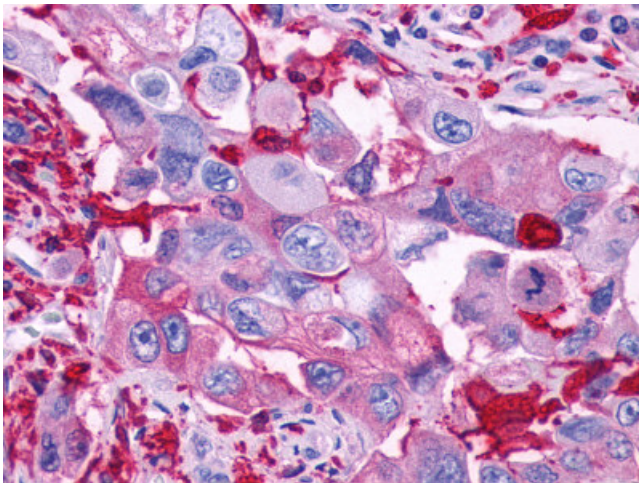
Anti-GPR39 antibody IHC of human Brain, Glioblastoma. Immunohistochemistry of formalin-fixed, paraffin-embedded tissue after heat-induced antigen retrieval.



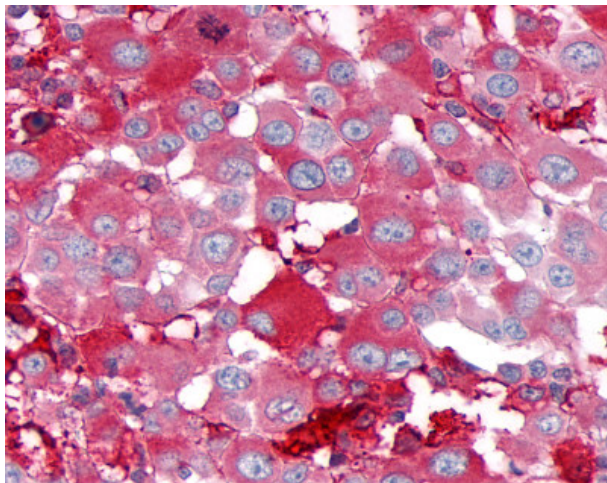
Anti-GPR39 antibody IHC of human small intestine. Immunohistochemistry of formalin-fixed, paraffin-embedded tissue after heat-induced antigen retrieval.



Anti-GPR39 antibody IHC of human Colon, Carcinoma. Immunohistochemistry of formalin-fixed, paraffin-embedded tissue after heat-induced antigen retrieval.



Anti-GPR39 antibody IHC of human Pancreas, Carcinoma. Immunohistochemistry of formalin-fixed, paraffin-embedded tissue after heat-induced antigen retrieval.



Anti-GPR39 antibody IHC of human Skin, Melanoma. Immunohistochemistry of formalin-fixed, paraffin-embedded tissue after heat-induced antigen retrieval.