

## Product datasheet for **TA316831**

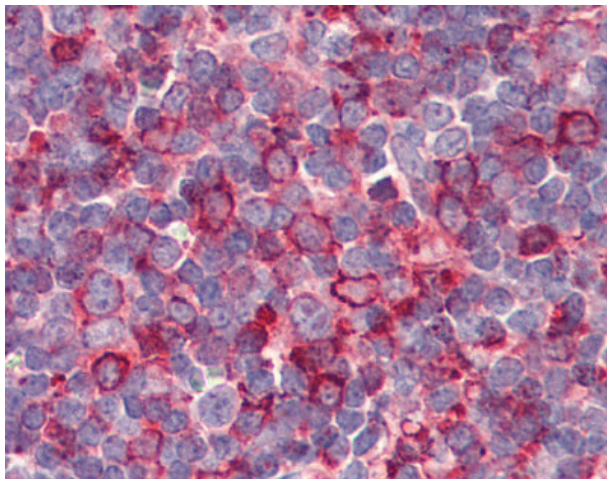
### GPR26 Rabbit Polyclonal Antibody

#### Product data:

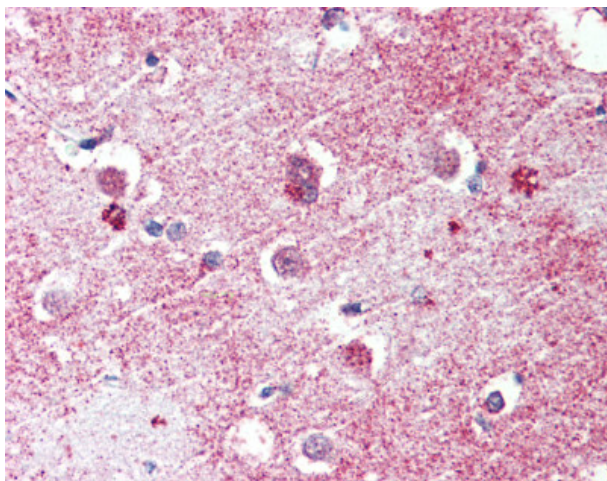
Product Type:	Primary Antibodies
Applications:	IHC
Recommended Dilution:	IHC-P (5 µg/ml)
Reactivity:	Bovine, Dog, Human, Monkey, Gibbon, Horse (Predicted: Mouse, Rat, Pig, Rabbit)
Host:	Rabbit
Isotype:	IgG
Clonality:	Polyclonal
Immunogen:	GPR26 antibody was raised against synthetic 11 amino acid peptide from internal region of human GPR26. Percent identity with other species by BLAST analysis: Human, Gibbon, Monkey, Marmoset, Bovine, Dog, Elephant, Panda, Horse (100%); Mouse, Rat, Rabbit, Pig (91%); Stickleback (82%).
Formulation:	PBS, 0.1% sodium azide.
Concentration:	lot specific
Purification:	Immunoaffinity Chromatography
Conjugation:	Unconjugated
Storage:	Store at -20°C as received.
Stability:	Stable for 12 months from date of receipt.
Gene Name:	G protein-coupled receptor 26
Database Link:	<a href="#">NP_703143</a> <a href="#">Entrez Gene 192153</a> <a href="#">RatEntrez Gene 233919</a> <a href="#">MouseEntrez Gene 486926</a> <a href="#">DogEntrez Gene 693327</a> <a href="#">MonkeyEntrez Gene 2849</a> <a href="#">Human Q8NDV2</a>
Synonyms:	DKFZp761H2121; FLJ33774; MGC138216
Note:	Specific for Human GPR26. BLAST analysis of the peptide immunogen showed no homology with other human proteins.
Protein Families:	Druggable Genome, GPCR, Transmembrane



[View online »](#)

**Product images:**

Anti-GPR26 antibody IHC of human tonsil. Immunohistochemistry of formalin-fixed, paraffin-embedded tissue after heat-induced antigen retrieval.



Anti-GPR26 antibody IHC of human brain, cortex. Immunohistochemistry of formalin-fixed, paraffin-embedded tissue after heat-induced antigen retrieval.