

## Product datasheet for **TA316825**

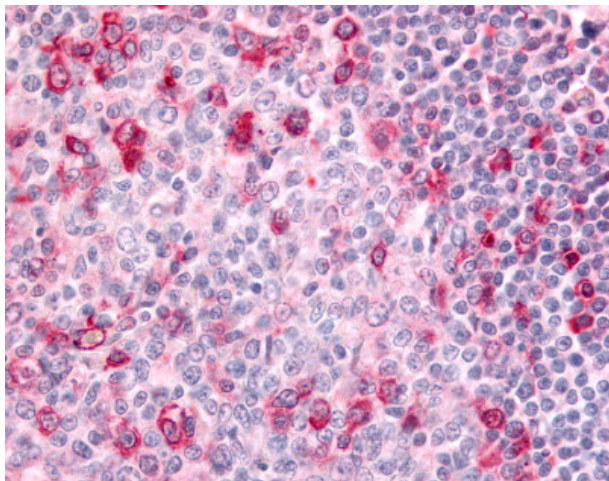
### GPR183 Rabbit Polyclonal Antibody

#### Product data:

Product Type:	Primary Antibodies
Applications:	IHC
Recommended Dilution:	IHC-P (10 µg/ml)
Reactivity:	Gorilla, Human (Predicted: Monkey, Mouse, Rat, Bat, Bovine, Dog, Hamster, Horse, Pig, Rabbit)
Host:	Rabbit
Isotype:	IgG
Clonality:	Polyclonal
Immunogen:	GPR183 / EBI2 antibody was raised against synthetic 15 amino acid peptide from C-terminus of human GPR183 / EBI2. Percent identity with other species by BLAST analysis: Human, Gorilla, Monkey (100%); Marmoset, Mouse, Rat, Hamster, Elephant, Panda, Dog, Bat, Bovine, Horse, Rabbit, Pig (93%); Opossum, Platypus, Catfish, Zebrafish (80%).
Formulation:	PBS, 0.1% sodium azide.
Purification:	Immunoaffinity Chromatography
Conjugation:	Unconjugated
Storage:	Store at -20°C as received.
Stability:	Stable for 12 months from date of receipt.
Gene Name:	G protein-coupled receptor 183
Database Link:	<a href="#">NP_004942</a> <a href="#">Entrez Gene 321019 Mouse</a> <a href="#">Entrez Gene 679975 Rat</a> <a href="#">Entrez Gene 102154241 Dog</a> <a href="#">Entrez Gene 698844 Monkey</a> <a href="#">Entrez Gene 1880 Human P32249</a>
Synonyms:	EBI2; hEBI2
Note:	Specific for Human GPR183 / EBI2. BLAST analysis of the peptide immunogen showed no homology with other human proteins.
Protein Families:	Druggable Genome, GPCR, Transmembrane



[View online »](#)

**Product images:**

Anti-GPR183 / EB12 antibody IHC of human tonsil. Immunohistochemistry of formalin-fixed, paraffin-embedded tissue after heat-induced antigen retrieval.