

Product datasheet for **TA316821**

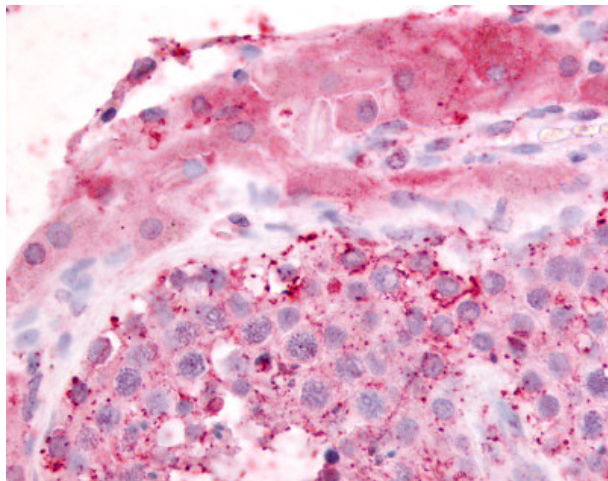
GPR182 Rabbit Polyclonal Antibody

Product data:

Product Type:	Primary Antibodies
Applications:	IHC
Recommended Dilution:	IHC-P (10 µg/ml)
Reactivity:	Gorilla, Human (Predicted: Monkey)
Host:	Rabbit
Isotype:	IgG
Clonality:	Polyclonal
Immunogen:	GPR182 / ADMR antibody was raised against synthetic 18 amino acid peptide from N-terminus of human GPR182 / ADMR. Percent identity with other species by BLAST analysis: Human, Gorilla (100%); Gibbon, Marmoset (94%); Monkey (83%).
Formulation:	PBS, 0.1% sodium azide.
Concentration:	lot specific
Purification:	Immunoaffinity Chromatography
Conjugation:	Unconjugated
Storage:	Store at -20°C as received.
Stability:	Stable for 12 months from date of receipt.
Gene Name:	G protein-coupled receptor 182
Database Link:	NP_009195 Entrez Gene 713866 Monkey Entrez Gene 11318 Human O15218
Synonyms:	7TMR; ADMR; AM-R; AMR; G10D; gamrh; hrhAMR
Note:	Specific for Human GPR182 / ADMR. BLAST analysis of the peptide immunogen showed no homology with other human proteins.
Protein Families:	Druggable Genome, GPCR, Transmembrane



[View online »](#)

Product images:

Anti-GPR182 / ADMR antibody IHC of human testis. Immunohistochemistry of formalin-fixed, paraffin-embedded tissue after heat-induced antigen retrieval.