

## Product datasheet for **TA316813**

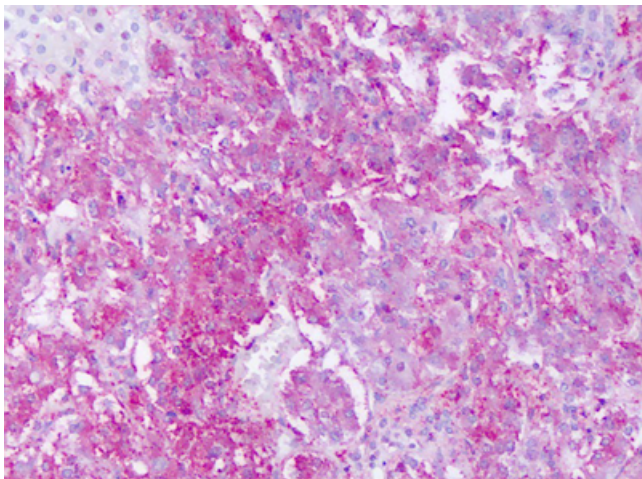
### GPR161 Rabbit Polyclonal Antibody

#### Product data:

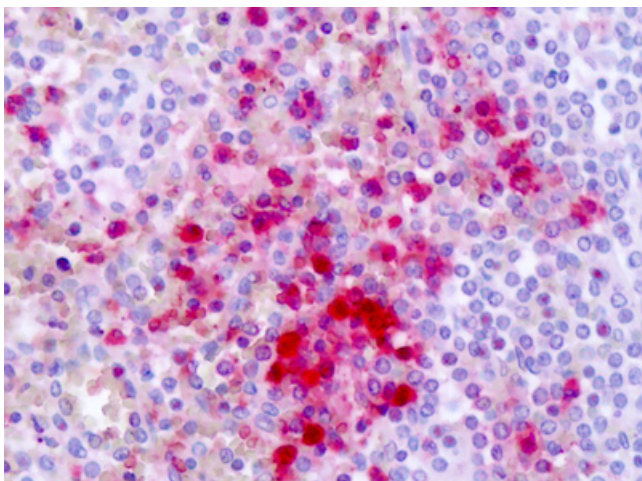
Product Type:	Primary Antibodies
Applications:	IHC
Recommended Dilution:	IHC-P (2 - 3 µg/ml)
Reactivity:	Gorilla, Human, Monkey, Gibbon, Hamster (Predicted: Dog, Horse, Rabbit)
Host:	Rabbit
Isotype:	IgG
Clonality:	Polyclonal
Immunogen:	GPR161 antibody was raised against synthetic 19 amino acid peptide from 3rd cytoplasmic domain of human GPR161. Percent identity with other species by BLAST analysis: Human, Gorilla, Gibbon, Monkey, Marmoset, Hamster (100%); Panda, Dog, Horse, Rabbit (95%); Mouse, Elephant, Bat, Pig, Opossum, Turkey, Chicken (89%).
Formulation:	PBS, 0.1% sodium azide.
Concentration:	lot specific
Purification:	Immunoaffinity Chromatography
Conjugation:	Unconjugated
Storage:	Store at -20°C as received.
Stability:	Stable for 12 months from date of receipt.
Gene Name:	G protein-coupled receptor 161
Database Link:	<a href="#">NP_031395</a> <a href="#">Entrez Gene 490358 Dog</a> <a href="#">Entrez Gene 698934 Monkey</a> <a href="#">Entrez Gene 23432 Human</a> <a href="#">Q8N6U8</a>
Synonyms:	FLJ33952; G-protein coupled receptor; G protein-coupled receptor 161; OTTHUMP00000032585; OTTHUMP00000032586; OTTHUMP00000032587; RE2
Note:	Specific for Human GPR161. BLAST analysis of the peptide immunogen showed no homology with other human proteins, except MAGEA10 (63%).
Protein Families:	Druggable Genome, GPCR, Transmembrane



[View online »](#)

**Product images:**

Anti-GPR161 antibody IHC of human adrenal. Immunohistochemistry of formalin-fixed, paraffin-embedded tissue after heat-induced antigen retrieval. Antibody dilution 2-3 ug/ml.



Anti-GPR161 antibody IHC of human spleen. Immunohistochemistry of formalin-fixed, paraffin-embedded tissue after heat-induced antigen retrieval. Antibody dilution 2-3 ug/ml.