

Product datasheet for **TA316809**

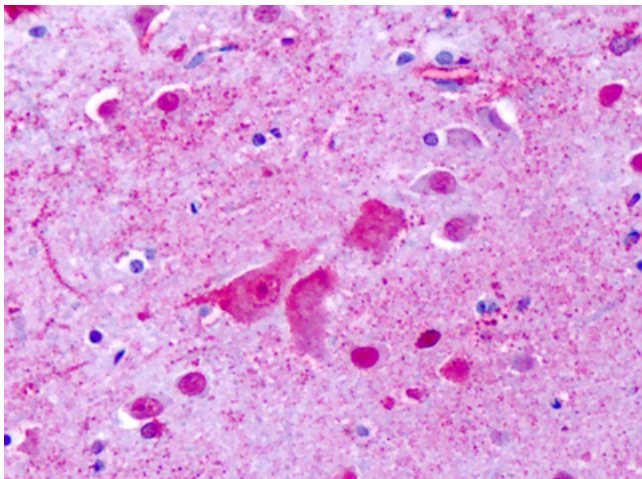
GPR137 Rabbit Polyclonal Antibody

Product data:

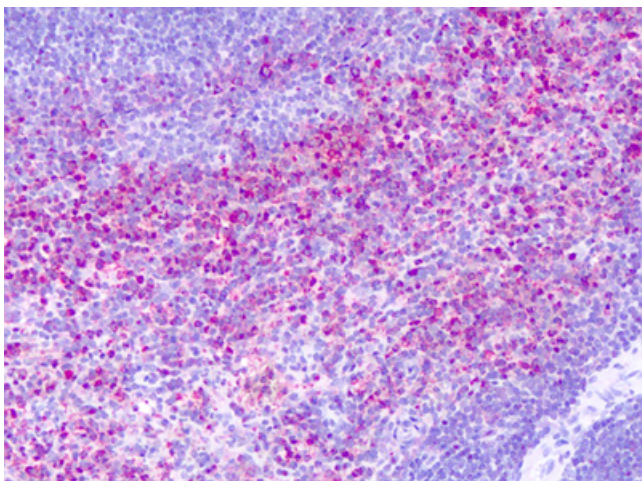
Product Type:	Primary Antibodies
Applications:	IHC
Recommended Dilution:	IHC-P (19 µg/ml)
Reactivity:	Bat, Bovine, Dog, Gorilla, Human, Monkey, Mouse, Pig, Rat, Gibbon, Horse
Host:	Rabbit
Isotype:	IgG
Clonality:	Polyclonal
Immunogen:	GPR137 antibody was raised against synthetic 16 amino acid peptide from 2nd cytoplasmic domain of human GPR137. Percent identity with other species by BLAST analysis: Human, Gorilla, Gibbon, Monkey, Marmoset, Mouse, Rat, Dog, Bat, Bovine, Elephant, Panda, Horse, Pig (100%); Hamster (81%).
Formulation:	PBS, 0.1% sodium azide.
Concentration:	lot specific
Purification:	Immunoaffinity Chromatography
Conjugation:	Unconjugated
Storage:	Store at -20°C as received.
Stability:	Stable for 12 months from date of receipt.
Gene Name:	G protein-coupled receptor 137
Database Link:	NP_064540 Entrez Gene 107173 MouseEntrez Gene 689984 RatEntrez Gene 612124 DogEntrez Gene 717722 MonkeyEntrez Gene 56834 Human Q96N19
Synonyms:	C11orf4; GPR137A; TM7SF1L1
Note:	Specific for Human GPR137. BLAST analysis of the peptide immunogen showed no homology with other human proteins.
Protein Families:	Druggable Genome, Transmembrane



[View online »](#)

Product images:

Anti-GPR137 antibody IHC of human brain, cortex, cerebellum. Immunohistochemistry of formalin-fixed, paraffin-embedded tissue after heat-induced antigen retrieval. Antibody concentration 7 ug/ml.



Anti-GPR137 antibody IHC of human spleen. Immunohistochemistry of formalin-fixed, paraffin-embedded tissue after heat-induced antigen retrieval. Antibody concentration 7 ug/ml.