

Product datasheet for **TA316807**

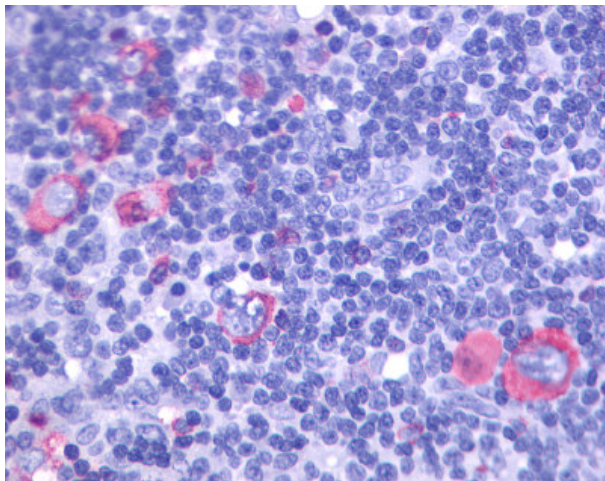
GPR137 Rabbit Polyclonal Antibody

Product data:

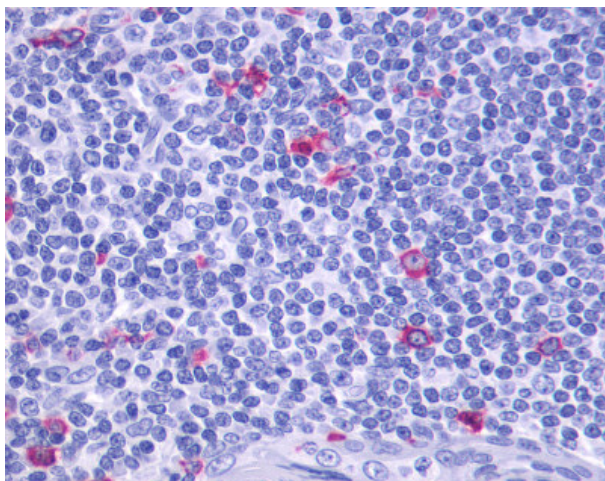
| | |
|-----------------------|--|
| Product Type: | Primary Antibodies |
| Applications: | IHC |
| Recommended Dilution: | IHC-P (16 µg/ml) |
| Reactivity: | Bat, Dog, Gorilla, Human, Monkey, Mouse, Pig, Rat, Horse (Predicted: Bovine) |
| Host: | Rabbit |
| Isotype: | IgG |
| Clonality: | Polyclonal |
| Immunogen: | GPR137 antibody was raised against synthetic 17 amino acid peptide from 1st extracellular domain of human GPR137. Percent identity with other species by BLAST analysis: Human, Gorilla, Monkey, Marmoset, Mouse, Rat, Dog, Bat, Elephant, Panda, Horse, Pig (100%); Bovine (94%). |
| Formulation: | PBS, 0.1% sodium azide. |
| Concentration: | lot specific |
| Purification: | Immunoaffinity Chromatography |
| Conjugation: | Unconjugated |
| Storage: | Store at -20°C as received. |
| Stability: | Stable for 12 months from date of receipt. |
| Gene Name: | G protein-coupled receptor 137 |
| Database Link: | NP_064540 Entrez Gene 107173 MouseEntrez Gene 689984 RatEntrez Gene 612124 DogEntrez Gene 717722 MonkeyEntrez Gene 56834 Human Q96N19 |
| Synonyms: | C11orf4; GPR137A; TM7SF1L1 |
| Note: | Specific for Human GPR137. BLAST analysis of the peptide immunogen showed no homology with other human proteins, except GPR137B (53%). |
| Protein Families: | Druggable Genome, Transmembrane |



[View online »](#)

Product images:

Anti-GPR137 antibody IHC of human Lymph Node, Hodgkins Lymphoma. Immunohistochemistry of formalin-fixed, paraffin-embedded tissue after heat-induced antigen retrieval.



Anti-GPR137 antibody IHC of human tonsil. Immunohistochemistry of formalin-fixed, paraffin-embedded tissue after heat-induced antigen retrieval.