

Product datasheet for **TA316806**

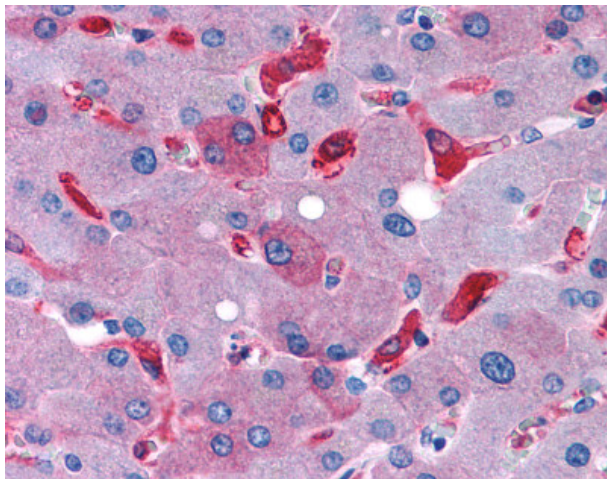
GPR128 (ADGRG7) Rabbit Polyclonal Antibody

Product data:

Product Type:	Primary Antibodies
Applications:	IHC
Recommended Dilution:	IHC-P (6 µg/ml)
Reactivity:	Gorilla, Human (Predicted: Monkey)
Host:	Rabbit
Isotype:	IgG
Clonality:	Polyclonal
Immunogen:	GPR128 antibody was raised against synthetic 20 amino acid peptide from C-terminus of human GPR128. Percent identity with other species by BLAST analysis: Human, Gorilla (100%); Gibbon, Marmoset (95%); Monkey (85%).
Formulation:	PBS, 0.1% sodium azide.
Concentration:	lot specific
Purification:	Immunoaffinity Chromatography
Conjugation:	Unconjugated
Storage:	Store at -20°C as received.
Stability:	Stable for 12 months from date of receipt.
Gene Name:	adhesion G protein-coupled receptor G7
Database Link:	NP_116176 Entrez Gene 700839 Monkey Entrez Gene 84873 Human Q96K78
Synonyms:	GPR128
Note:	Specific for Human GPR128. BLAST analysis of the peptide immunogen showed no homology with other human proteins.
Protein Families:	Druggable Genome, GPCR, Transmembrane



[View online »](#)

Product images:

Anti-GPR128 antibody IHC of human liver. Immunohistochemistry of formalin-fixed, paraffin-embedded tissue after heat-induced antigen retrieval.