

Product datasheet for **TA316798**

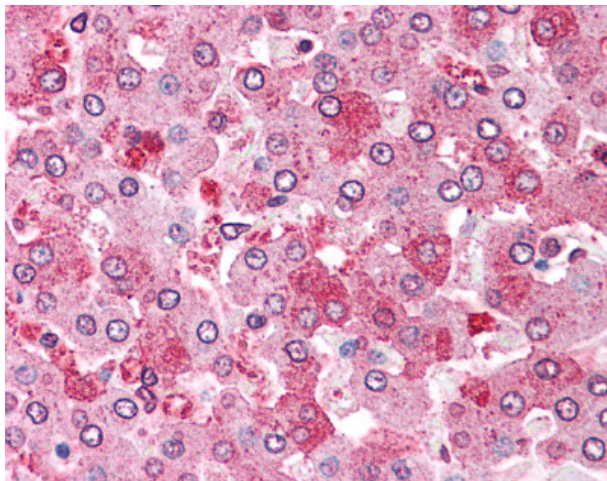
Glypican 4 (GPC4) Rabbit Polyclonal Antibody

Product data:

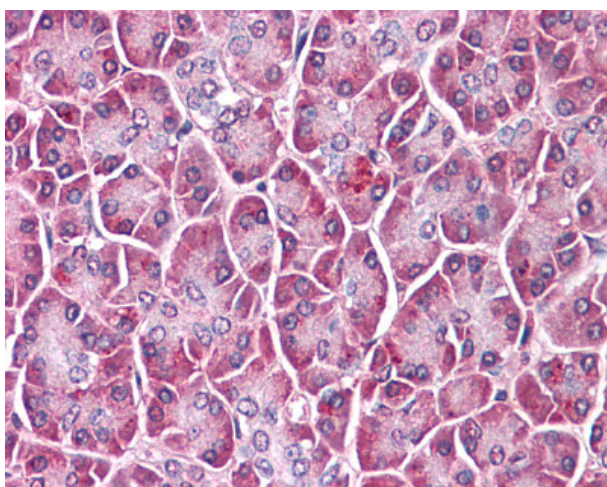
Product Type:	Primary Antibodies
Applications:	IHC
Recommended Dilution:	IHC-P (15 - 20 µg/ml)
Reactivity:	Gorilla, Human (Predicted: Monkey, Rabbit)
Host:	Rabbit
Isotype:	IgG
Clonality:	Polyclonal
Immunogen:	GPC4 / Glypican 4 antibody was raised against synthetic 16 amino acid peptide from C-terminus of human GPC4 / Glypican 4. Percent identity with other species by BLAST analysis: Human, Gorilla, Monkey (100%); Gibbon, Marmoset, Rabbit (94%); Mouse, Rat, Bovine, Panda (88%); Hamster, Horse (81%).
Formulation:	PBS, 0.1% sodium azide.
Concentration:	lot specific
Purification:	Immunoaffinity Chromatography
Conjugation:	Unconjugated
Storage:	Store at -20°C as received.
Stability:	Stable for 12 months from date of receipt.
Gene Name:	glypican 4
Database Link:	NP_001439 Entrez Gene 706665 Monkey Entrez Gene 2239 Human O75487
Synonyms:	K-glypican
Note:	Specific for Human GPC4 / Glypican 4. BLAST analysis of the peptide immunogen showed no homology with other human proteins, except PKD2L1 (44%).
Protein Families:	Druggable Genome



[View online »](#)

Product images:

Anti-GPC4 / Glypican 4 antibody IHC of human liver. Immunohistochemistry of formalin-fixed, paraffin-embedded tissue after heat-induced antigen retrieval.



Anti-GPC4 / Glypican 4 antibody IHC of human pancreas. Immunohistochemistry of formalin-fixed, paraffin-embedded tissue after heat-induced antigen retrieval.