

Product datasheet for **TA316797**

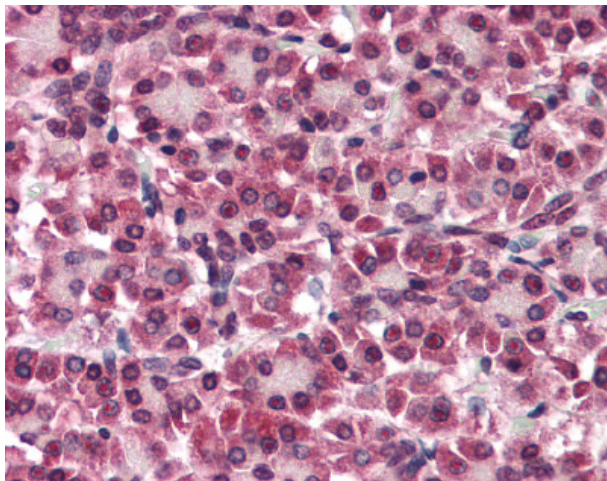
Glypican 4 (GPC4) Rabbit Polyclonal Antibody

Product data:

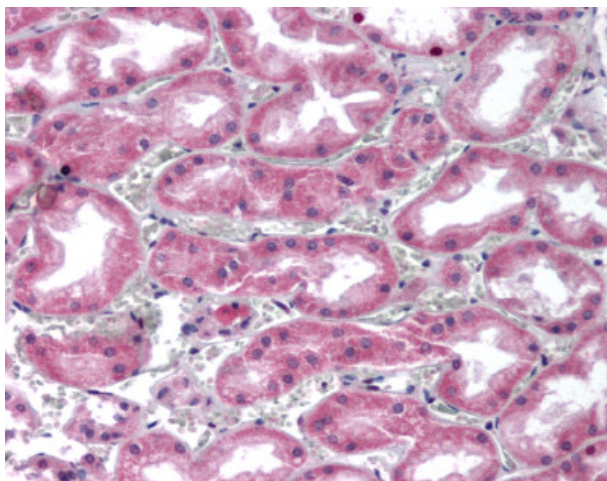
Product Type:	Primary Antibodies
Applications:	IHC
Recommended Dilution:	IHC-P (5 - 10 µg/ml)
Reactivity:	Bat, Gorilla, Human, Mouse, Rat, Gibbon, Hamster (Predicted: Monkey, Dog, Rabbit)
Host:	Rabbit
Isotype:	IgG
Clonality:	Polyclonal
Immunogen:	GPC4 / Glypican 4 antibody was raised against synthetic 16 amino acid peptide from internal region of human GPC4 / Glypican 4. Percent identity with other species by BLAST analysis: Human, Gorilla, Gibbon, Monkey, Mouse, Rat, Bat, Hamster (100%); Marmoset, Dog, Elephant, Panda, Rabbit (94%); Bovine, Horse, Pig (88%).
Formulation:	PBS, 0.1% sodium azide.
Concentration:	lot specific
Purification:	Immunoaffinity Chromatography
Conjugation:	Unconjugated
Storage:	Store at -20°C as received.
Stability:	Stable for 12 months from date of receipt.
Gene Name:	glypican 4
Database Link:	NP_001439 Entrez Gene 14735 MouseEntrez Gene 317322 RatEntrez Gene 492144 DogEntrez Gene 706665 MonkeyEntrez Gene 2239 Human O75487
Synonyms:	K-glypican
Note:	Specific for Human GPC4 / Glypican 4. BLAST analysis of the peptide immunogen showed no homology with other human proteins.
Protein Families:	Druggable Genome



[View online »](#)

Product images:

Anti-GPC4 / Glypican 4 antibody IHC of human pancreas. Immunohistochemistry of formalin-fixed, paraffin-embedded tissue after heat-induced antigen retrieval.



Anti-GPC4 / Glypican 4 antibody IHC of human kidney. Immunohistochemistry of formalin-fixed, paraffin-embedded tissue after heat-induced antigen retrieval.