

## Product datasheet for **TA316796**

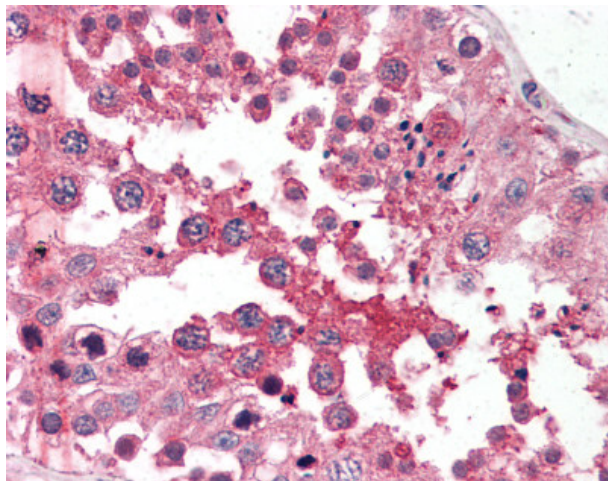
### Glypican 4 (GPC4) Rabbit Polyclonal Antibody

#### Product data:

Product Type:	Primary Antibodies
Applications:	IHC
Recommended Dilution:	IHC-P (2.5 - 5 µg/ml)
Reactivity:	Dog, Gorilla, Human, Pig, Gibbon, Hamster (Predicted: Monkey, Mouse, Bovine, Horse)
Host:	Rabbit
Isotype:	IgG
Clonality:	Polyclonal
Immunogen:	GPC4 / Glypican 4 antibody was raised against synthetic 16 amino acid peptide from N-Terminus of human GPC4 / Glypican 4. Percent identity with other species by BLAST analysis: Human, Gorilla, Gibbon, Monkey, Hamster, Panda, Dog, Pig (100%); Marmoset, Mouse, Elephant, Bovine, Horse (94%); Rat, Bat, Rabbit (88%).
Formulation:	PBS, 0.1% sodium azide.
Concentration:	lot specific
Purification:	Immunoaffinity Chromatography
Conjugation:	Unconjugated
Storage:	Store at -20°C as received.
Stability:	Stable for 12 months from date of receipt.
Gene Name:	glypican 4
Database Link:	<a href="#">NP_001439</a> <a href="#">Entrez Gene 14735 Mouse</a> <a href="#">Entrez Gene 492144 Dog</a> <a href="#">Entrez Gene 706665 Monkey</a> <a href="#">Entrez Gene 2239 Human</a> <a href="#">O75487</a>
Synonyms:	K-glypican
Note:	Specific for Human GPC4 / Glypican 4. BLAST analysis of the peptide immunogen showed no homology with other human proteins.
Protein Families:	Druggable Genome



[View online »](#)

**Product images:**

Anti-GPC4 / Glypican 4 antibody IHC of human testis. Immunohistochemistry of formalin-fixed, paraffin-embedded tissue after heat-induced antigen retrieval.