

Product datasheet for **TA316790**

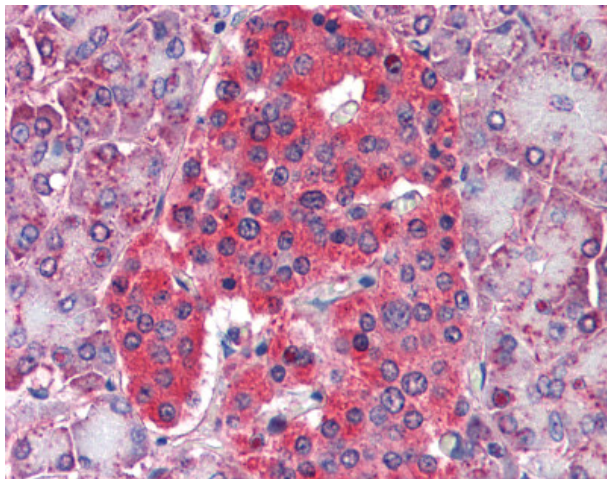
GLUD1 Rabbit Polyclonal Antibody

Product data:

Product Type:	Primary Antibodies
Applications:	IHC
Recommended Dilution:	ELISA (1:6000 - 1:24000), IHC-P (5 µg/ml), WB
Reactivity:	Bovine, Human
Host:	Rabbit
Isotype:	IgG
Clonality:	Polyclonal
Immunogen:	GLUD1/Glutamate Dehydrogenase antibody was raised against bovine liver glutamate dehydrogenase.
Formulation:	PBS, pH 7.2, 0.01% sodium azide, 40% glycerol.
Concentration:	lot specific
Purification:	Ion Exchange Chromatography
Conjugation:	Unconjugated
Storage:	Store at -20°C as received.
Stability:	Stable for 12 months from date of receipt.
Gene Name:	glutamate dehydrogenase 1
Database Link:	NP_005262 Entrez Gene 2746 Human P00367
Synonyms:	GDH; GDH1; GLUD
Note:	Assay by immunoelectrophoresis resulted in a single precipitin arc against anti rabbit serum as well as purified and partially purified bovine liver glutamate dehydrogenase.
Protein Families:	Druggable Genome
Protein Pathways:	Alanine, aspartate and glutamate metabolism, Arginine and proline metabolism, D-Glutamine and D-glutamate metabolism, Metabolic pathways, Nitrogen metabolism



[View online »](#)

Product images:

Anti-GLUD1 antibody IHC of human pancreas. Immunohistochemistry of formalin-fixed, paraffin-embedded tissue after heat-induced antigen retrieval. Antibody concentration 5 ug/ml.