

Product datasheet for **TA316785**

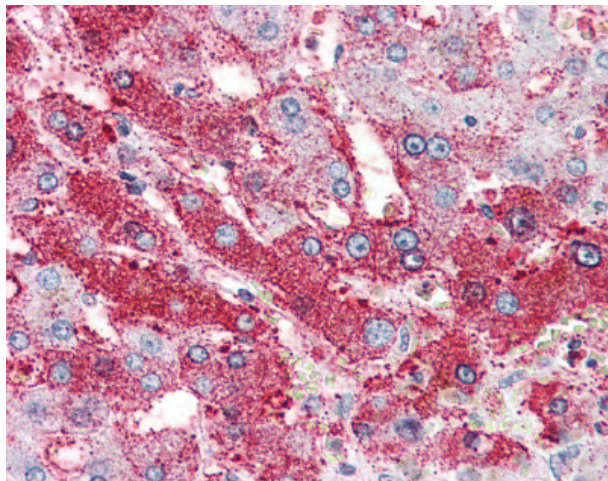
GLP2R Rabbit Polyclonal Antibody

Product data:

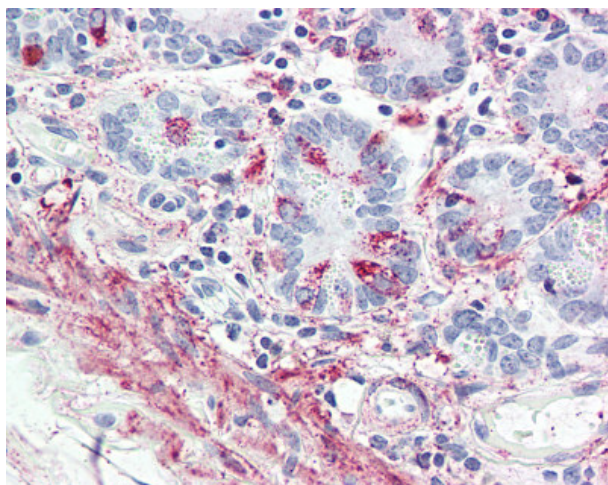
Product Type:	Primary Antibodies
Applications:	IHC
Recommended Dilution:	IHC-P (5 - 10 µg/ml)
Reactivity:	Human, Monkey
Host:	Rabbit
Isotype:	IgG
Clonality:	Polyclonal
Immunogen:	GLP2R / Glp-2 antibody was raised against synthetic 16 amino acid peptide from internal region of human GLP2R. Percent identity with other species by BLAST analysis: Human, Monkey, Marmoset (100%); Gorilla, Gibbon (94%); Rat, Dog, Bovine, Elephant, Panda (81%).
Formulation:	PBS, 0.1% sodium azide.
Concentration:	lot specific
Purification:	Immunoaffinity Chromatography
Conjugation:	Unconjugated
Storage:	Store at -20°C as received.
Stability:	Stable for 12 months from date of receipt.
Gene Name:	glucagon like peptide 2 receptor
Database Link:	NP_004237 Entrez Gene 717783 Monkey Entrez Gene 9340 Human O95838
Synonyms:	glucagon-like peptide 2 receptor; OTTHUMP00000160769
Note:	Specific for Human GLP2R. BLAST analysis of the peptide immunogen showed no homology with other human proteins.
Protein Families:	Druggable Genome, GPCR, Transmembrane
Protein Pathways:	Neuroactive ligand-receptor interaction



[View online »](#)

Product images:

Anti-GLP2R antibody IHC of human liver. Immunohistochemistry of formalin-fixed, paraffin-embedded tissue after heat-induced antigen retrieval.



Anti-GLP2R antibody IHC of human small intestine. Immunohistochemistry of formalin-fixed, paraffin-embedded tissue after heat-induced antigen retrieval.