

Product datasheet for **TA316782**

GLG1 Rabbit Polyclonal Antibody

Product data:

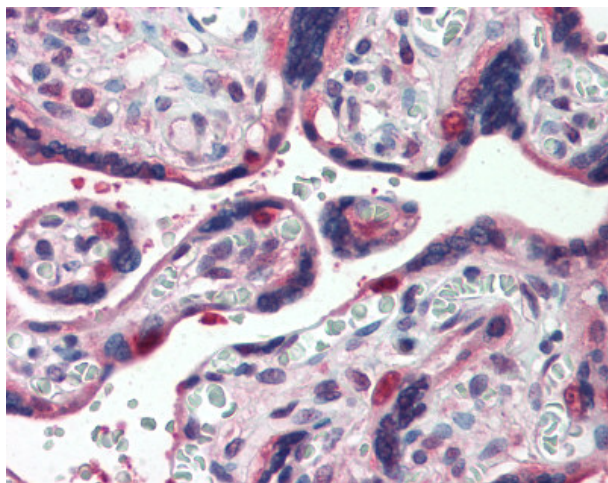
| | |
|-----------------------|--|
| Product Type: | Primary Antibodies |
| Applications: | IHC |
| Recommended Dilution: | IHC-P (1.25 - 2.5 µg/ml) |
| Reactivity: | Bat, Bovine, Chicken, Dog, Xenopus, Gorilla, Human, Monkey, Mouse, Rabbit, Rat, Zebrafish, Gibbon, Hamster, Horse |
| Host: | Rabbit |
| Isotype: | IgG |
| Clonality: | Polyclonal |
| Immunogen: | GLG1 / MG160 antibody was raised against synthetic 18 amino acid peptide from internal region of human GLG1. Percent identity with other species by BLAST analysis: Human, Gorilla, Gibbon, Monkey, Marmoset, Mouse, Rat, Dog, Bat, Bovine, Hamster, Elephant, Panda, Horse, Rabbit, Opossum, Turkey, Chicken, Xenopus, Zebrafish (100%); Stickleback (89%). |
| Formulation: | PBS, 0.1% sodium azide. |
| Concentration: | lot specific |
| Purification: | Immunoaffinity Chromatography |
| Conjugation: | Unconjugated |
| Storage: | Store at -20°C as received. |
| Stability: | Stable for 12 months from date of receipt. |
| Gene Name: | golgi glycoprotein 1 |
| Database Link: | NP_036333 Entrez Gene 20340 MouseEntrez Gene 29476 RatEntrez Gene 479654 DogEntrez Gene 710037 MonkeyEntrez Gene 2734 Human Q92896 |
| Synonyms: | CFR-1; ESL-1; MG-160; MG160 |
| Note: | Specific for Human GLG1. BLAST analysis of the peptide immunogen showed no homology with other human proteins. |
| Protein Families: | Druggable Genome, Transmembrane |



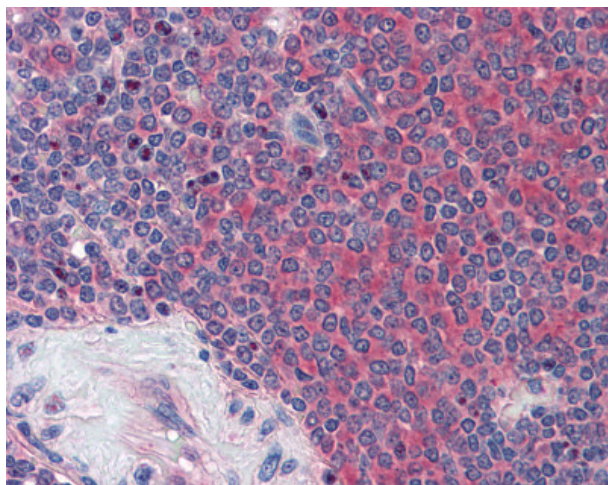
[View online »](#)

Protein Pathways: Cell adhesion molecules (CAMs)

Product images:



Anti-GLG1 antibody IHC of human placenta. Immunohistochemistry of formalin-fixed, paraffin-embedded tissue after heat-induced antigen retrieval.



Anti-GLG1 antibody IHC of human spleen. Immunohistochemistry of formalin-fixed, paraffin-embedded tissue after heat-induced antigen retrieval.