

Product datasheet for **TA316781**

GLG1 Rabbit Polyclonal Antibody

Product data:

Product Type:	Primary Antibodies
Applications:	IHC
Recommended Dilution:	IHC-P (15 µg/ml)
Reactivity:	Bat, Bovine, Chimpanzee, Chicken, Dog, Xenopus, Gorilla, Human, Monkey, Mouse, Pig, Rabbit, Rat, Gibbon, Horse, Orang-Utan, Guinea Pig (Predicted: Hamster)
Host:	Rabbit
Isotype:	IgG
Clonality:	Polyclonal
Immunogen:	GLG1 / MG160 antibody was raised against synthetic 19 amino acid peptide from internal region of human GLG1. Percent identity with other species by BLAST analysis: Human, Chimpanzee, Gorilla, Orangutan, Gibbon, Monkey, Galago, Marmoset, Mouse, Rat, Elephant, Panda, Dog, Bat, Bovine, Horse, Rabbit, Pig, Opossum, Guinea pig, Turkey, Zebra finch, Chicken, Lizard, Xenopus (100%); Hamster (95%); Stickleback, Medaka, Pufferfish, Zebrafish (84%).
Formulation:	PBS, 0.1% sodium azide.
Concentration:	lot specific
Purification:	Immunoaffinity Chromatography
Conjugation:	Unconjugated
Storage:	Store at -20°C as received.
Stability:	Stable for 12 months from date of receipt.
Gene Name:	golgi glycoprotein 1
Database Link:	NP_036333 Entrez Gene 20340 Mouse Entrez Gene 29476 Rat Entrez Gene 479654 Dog Entrez Gene 710037 Monkey Entrez Gene 2734 Human Q92896
Synonyms:	CFR-1; ESL-1; MG-160; MG160
Note:	Specific for Human GLG1. BLAST analysis of the peptide immunogen showed no homology with other human proteins.

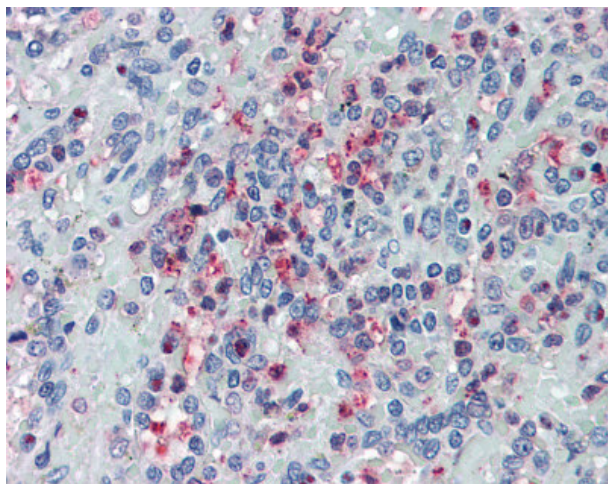


[View online »](#)

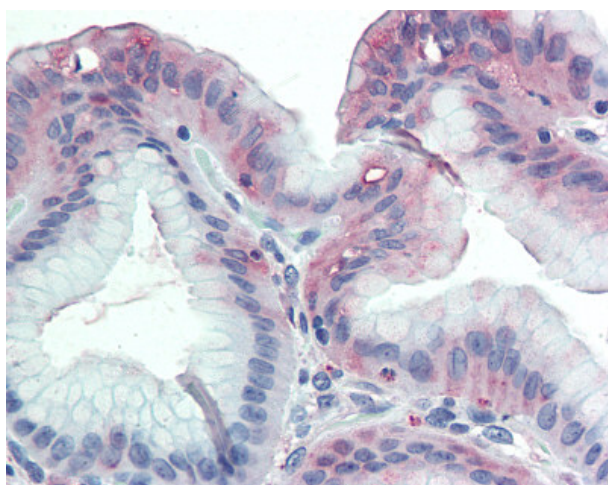
Protein Families: Druggable Genome, Transmembrane

Protein Pathways: Cell adhesion molecules (CAMs)

Product images:



Anti-GLG1 antibody IHC of human spleen. Immunohistochemistry of formalin-fixed, paraffin-embedded tissue after heat-induced antigen retrieval.



Anti-GLG1 antibody IHC of human stomach. Immunohistochemistry of formalin-fixed, paraffin-embedded tissue after heat-induced antigen retrieval.