

## Product datasheet for **TA316780**

### GLG1 Rabbit Polyclonal Antibody

#### Product data:

Product Type:	Primary Antibodies
Applications:	IHC
Recommended Dilution:	IHC-P (15 µg/ml)
Reactivity:	Bat, Bovine, Chimpanzee, Dog, Gorilla, Human, Monkey, Mouse, Pig, Rabbit, Rat, Gibbon, Hamster, Horse, Orang-Utan, Guinea Pig
Host:	Rabbit
Isotype:	IgG
Clonality:	Polyclonal
Immunogen:	GLG1 / MG160 antibody was raised against synthetic 18 amino acid peptide from internal region of human GLG1. Percent identity with other species by BLAST analysis: Human, Chimpanzee, Gorilla, Orangutan, Gibbon, Monkey, Marmoset, Mouse, Rat, Hamster, Panda, Dog, Bat, Bovine, Horse, Rabbit, Pig, Guinea pig (100%); Galago, Elephant, Platypus, Medaka (94%); Opossum, Turkey, Zebra finch, Chicken, Stickleback, Pufferfish (89%); Xenopus, Zebrafish (83%).
Formulation:	PBS, 0.1% sodium azide.
Concentration:	lot specific
Purification:	Immunoaffinity Chromatography
Conjugation:	Unconjugated
Storage:	Store at -20°C as received.
Stability:	Stable for 12 months from date of receipt.
Gene Name:	golgi glycoprotein 1
Database Link:	<a href="#">NP_036333</a> <a href="#">Entrez Gene 20340 Mouse</a> <a href="#">Entrez Gene 29476 Rat</a> <a href="#">Entrez Gene 479654 Dog</a> <a href="#">Entrez Gene 710037 Monkey</a> <a href="#">Entrez Gene 2734 Human</a> <a href="#">Q92896</a>
Synonyms:	CFR-1; ESL-1; MG-160; MG160
Note:	Specific for Human GLG1. BLAST analysis of the peptide immunogen showed no homology with other human proteins.

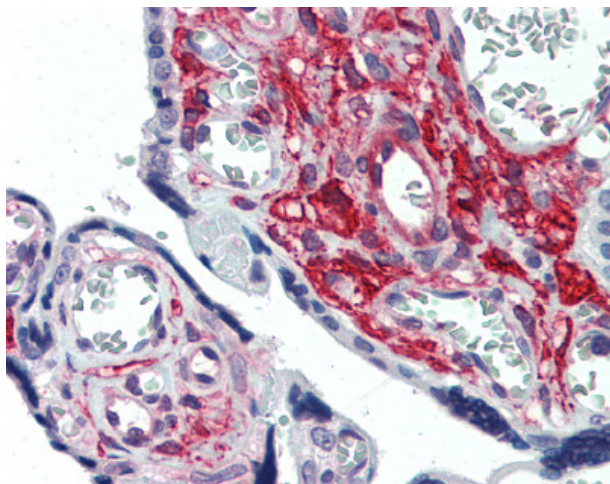


[View online »](#)

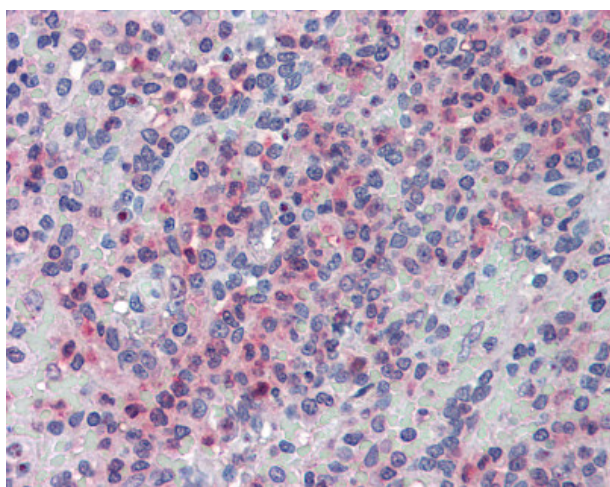
Protein Families: Druggable Genome, Transmembrane

Protein Pathways: Cell adhesion molecules (CAMs)

**Product images:**



Anti-GLG1 antibody IHC of human placenta. Immunohistochemistry of formalin-fixed, paraffin-embedded tissue after heat-induced antigen retrieval.



Anti-GLG1 antibody IHC of human spleen. Immunohistochemistry of formalin-fixed, paraffin-embedded tissue after heat-induced antigen retrieval.