

Product datasheet for **TA316777**

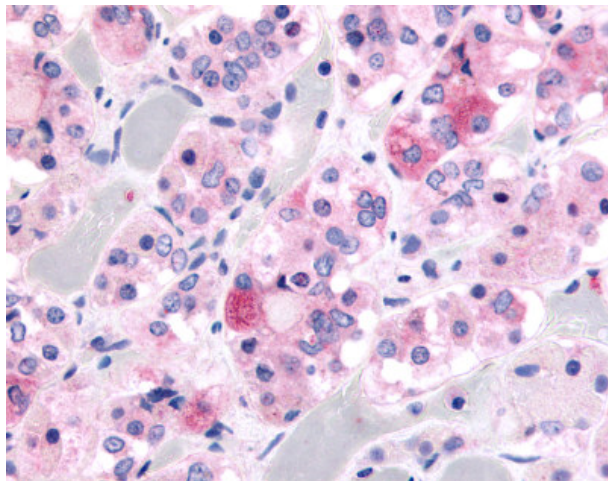
Ghrelin Receptor (GHSR) Rabbit Polyclonal Antibody

Product data:

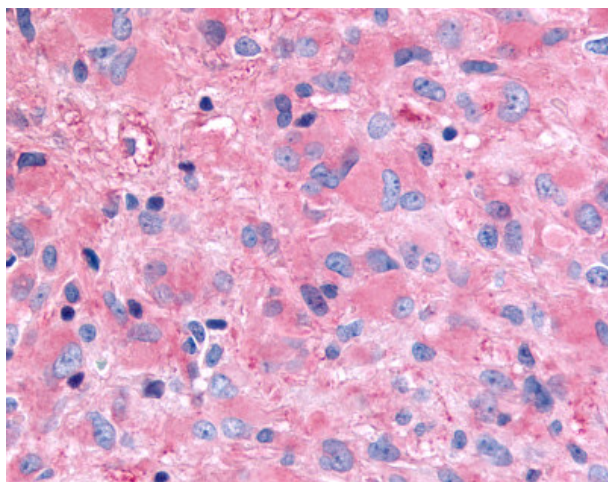
Product Type:	Primary Antibodies
Applications:	IHC
Recommended Dilution:	IHC-P (5 - 7.5 µg/ml)
Reactivity:	Gorilla, Human, Gibbon (Predicted: Monkey)
Host:	Rabbit
Isotype:	IgG
Clonality:	Polyclonal
Immunogen:	GHSR / Ghrelin Receptor antibody was raised against synthetic 13 amino acid peptide from N-terminal extracellular domain of human Ghrelin Receptor. Percent identity with other species by BLAST analysis: Human, Gorilla, Gibbon (100%); Monkey, Marmoset (92%); Mouse, Rat (85%).
Formulation:	PBS, 0.1% sodium azide.
Concentration:	lot specific
Purification:	Immunoaffinity Chromatography
Conjugation:	Unconjugated
Storage:	Store at -20°C as received.
Stability:	Stable for 12 months from date of receipt.
Gene Name:	growth hormone secretagogue receptor
Database Link:	NP_004113 Entrez Gene 694587 Monkey Entrez Gene 2693 Human Q92847
Synonyms:	GHDP
Note:	Specific for Human Ghrelin Receptor. BLAST analysis of the peptide immunogen showed no homology with other human proteins, except BAIAP3 (77%).
Protein Families:	Druggable Genome, GPCR, Transmembrane
Protein Pathways:	Neuroactive ligand-receptor interaction



[View online »](#)

Product images:

Anti-Ghrelin Receptor antibody IHC of human pituitary, anterior. Immunohistochemistry of formalin-fixed, paraffin-embedded tissue after heat-induced antigen retrieval.



Anti-GHSR / Ghrelin Receptor antibody IHC of human Brain, Glioblastoma. Immunohistochemistry of formalin-fixed, paraffin-embedded tissue after heat-induced antigen retrieval.