

Product datasheet for **TA316768**

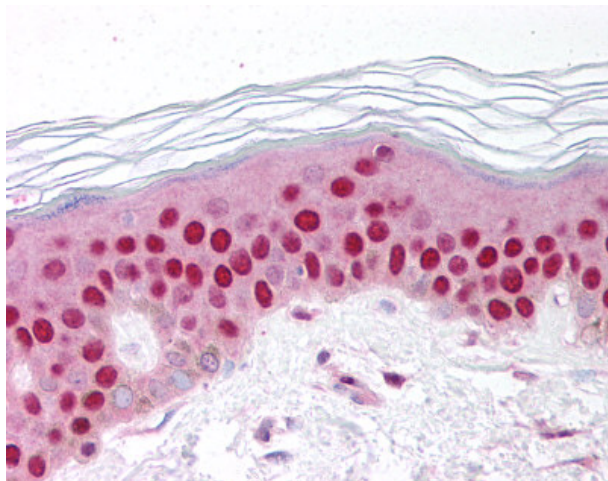
GDF 9 (GDF9) Rabbit Polyclonal Antibody

Product data:

Product Type:	Primary Antibodies
Applications:	IHC
Recommended Dilution:	ELISA (1:000 - 1:1000), IHC-P (10 µg/ml), WB
Reactivity:	Human
Host:	Rabbit
Isotype:	IgG
Clonality:	Polyclonal
Immunogen:	GDF9 / GDF-9 antibody was raised against synthetic peptide from human GDF9.
Formulation:	PBS, 0.1% sodium azide.
Concentration:	lot specific
Purification:	Protein G Column
Conjugation:	Unconjugated
Storage:	Store at -20°C as received.
Stability:	Stable for 12 months from date of receipt.
Gene Name:	growth differentiation factor 9
Database Link:	NP_005251 Entrez Gene 2661 Human O60383
Synonyms:	growth differentiation factor 9; OTTHUMP00000066213
Note:	Specific for Amino acids 45 to 59 of human GDF9
Protein Families:	Adult stem cells, Cancer stem cells, Druggable Genome, Embryonic stem cells, ES Cell Differentiation/IPS, Secreted Protein, Stem cell - Pluripotency, Stem cell relevant signaling - TGFb/BMP signaling pathway, Transmembrane



[View online »](#)

Product images:

Anti-GDF9 antibody IHC of human skin. Immunohistochemistry of formalin-fixed, paraffin-embedded tissue after heat-induced antigen retrieval. Antibody concentration 10 ug/ml.