

Product datasheet for **TA316756**

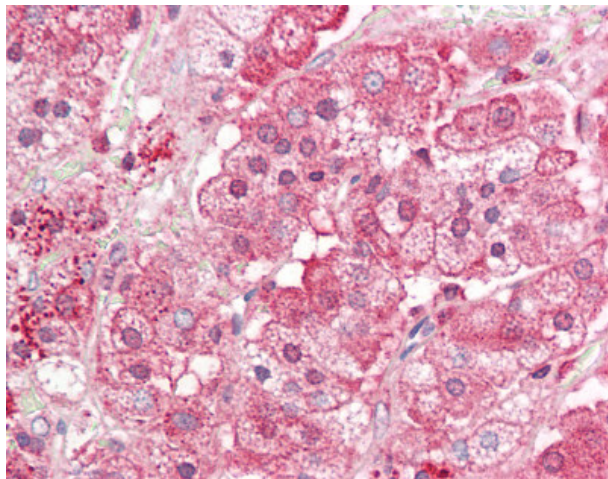
FURIN Rabbit Polyclonal Antibody

Product data:

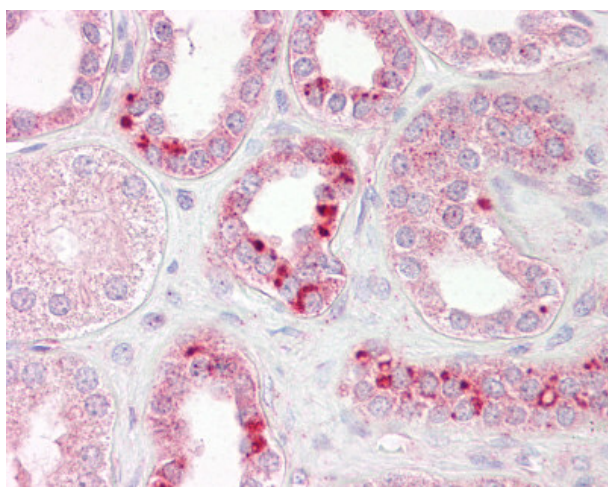
Product Type:	Primary Antibodies
Applications:	IHC
Recommended Dilution:	IHC-P (5 - 10 µg/ml)
Reactivity:	Bovine, Chimpanzee, Dog, Human, Monkey, Mouse, Rat, Horse
Host:	Rabbit
Isotype:	IgG
Clonality:	Polyclonal
Immunogen:	FURIN antibody was raised against a portion of amino acids 740-790 of human Furin was used as the immunogen.
Formulation:	PBS, 0.05% BSA, 0.05% sodium azide
Concentration:	lot specific
Purification:	Protein A Column
Conjugation:	Unconjugated
Storage:	Store at -20°C as received.
Stability:	Stable for 12 months from date of receipt.
Gene Name:	furin, paired basic amino acid cleaving enzyme
Database Link:	NP_002560 Entrez Gene 18550 Mouse Entrez Gene 54281 Rat Entrez Gene 488746 Dog Entrez Gene 715813 Monkey Entrez Gene 5045 Human P09958
Synonyms:	FUR; PACE; PCSK3; SPC1
Note:	Specific for Human FURIN
Protein Families:	Druggable Genome, Protease, Transmembrane



[View online »](#)

Product images:

Anti-FURIN antibody IHC of human adrenal. Immunohistochemistry of formalin-fixed, paraffin-embedded tissue after heat-induced antigen retrieval. Antibody concentration 5 ug/ml.



Anti-FURIN antibody IHC of human kidney. Immunohistochemistry of formalin-fixed, paraffin-embedded tissue after heat-induced antigen retrieval. Antibody concentration 5 ug/ml.