

Product datasheet for **TA316733**

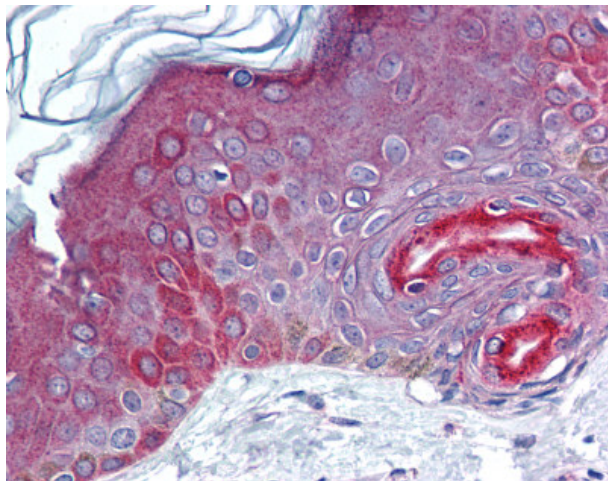
FAM3C Rabbit Polyclonal Antibody

Product data:

Product Type:	Primary Antibodies
Applications:	IHC
Recommended Dilution:	IHC-P (5 - 10 µg/ml), WB (0.5 - 1 µg/ml)
Reactivity:	Bovine, Chimpanzee, Chicken, Dog, Human, Monkey, Mouse, Opossum, Rat, Pufferfish
Host:	Rabbit
Isotype:	IgG
Clonality:	Polyclonal
Immunogen:	ILEI / FAM3C antibody was raised against synthetic peptide from human FAM3C.
Formulation:	PBS, 0.2% gelatin, 0.05% sodium azide.
Concentration:	lot specific
Purification:	Immunoaffinity Chromatography
Conjugation:	Unconjugated
Storage:	Store at -20°C as received.
Stability:	Stable for 12 months from date of receipt.
Gene Name:	family with sequence similarity 3 member C
Database Link:	NP_055703 Entrez Gene 27999 Mouse Entrez Gene 312159 Rat Entrez Gene 612336 Dog Entrez Gene 694209 Monkey Entrez Gene 10447 Human Q92520
Synonyms:	GS3786; ILEI
Note:	Specific for A portion of amino acids 40-80 of human FAM3C
Protein Families:	Secreted Protein, Transmembrane



[View online »](#)

Product images:

Anti-FAM3C antibody IHC of human skin. Immunohistochemistry of formalin-fixed, paraffin-embedded tissue after heat-induced antigen retrieval. Antibody concentration 10 ug/ml.