

Product datasheet for **TA316719**

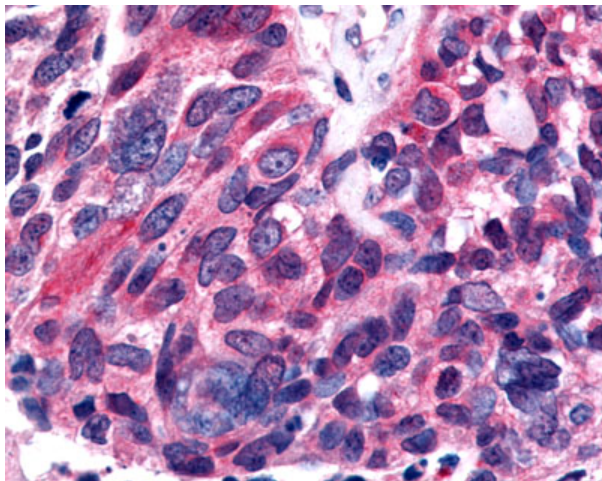
Estrogen Related Receptor beta (ESRRB) Rabbit Polyclonal Antibody

Product data:

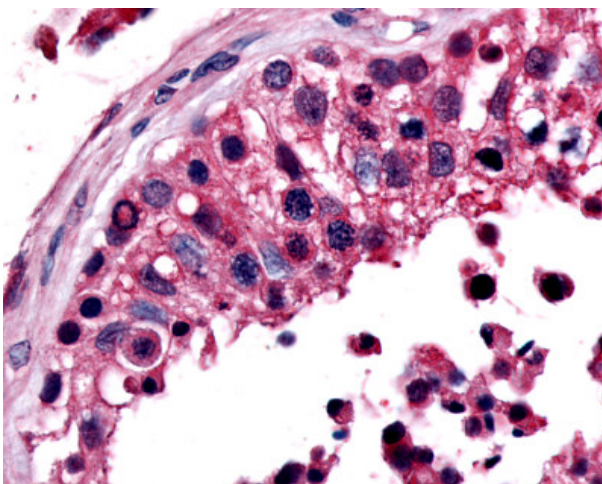
Product Type:	Primary Antibodies
Applications:	IHC
Recommended Dilution:	IHC-P (3 µg/ml)
Reactivity:	Bovine, Dog, Gorilla, Human, Monkey, Pig, Rabbit, Gibbon, Hamster, Horse (Predicted: Mouse, Rat, Chicken)
Host:	Rabbit
Isotype:	IgG
Clonality:	Polyclonal
Immunogen:	ESRRB / ERR Beta antibody was raised against synthetic 15 amino acid peptide from ligand-binding domain of human ESRRB. Percent identity with other species by BLAST analysis: Human, Gorilla, Gibbon, Monkey, Marmoset, Hamster, Panda, Dog, Bovine, Horse, Rabbit, Pig, Opossum (100%); Mouse, Rat, Elephant, Turkey, Chicken, Lizard (93%); Bat (87%); Stickleback, Medaka, Pufferfish, Zebrafish (80%).
Formulation:	PBS, 0.1% sodium azide.
Concentration:	lot specific
Purification:	Immunoaffinity Chromatography
Conjugation:	Unconjugated
Storage:	Store at -20°C as received.
Stability:	Stable for 12 months from date of receipt.
Gene Name:	estrogen related receptor beta
Database Link:	NP_004443 Entrez Gene 26380 Mouse Entrez Gene 299210 Rat Entrez Gene 490798 Dog Entrez Gene 703799 Monkey Entrez Gene 2103 Human O95718
Synonyms:	DFNB35; ERR2; ERRb; ESRL2; NR3B2
Note:	Specific for Human ESRRB. BLAST analysis of the peptide immunogen showed no homology with other human proteins, except ESRRG (67%).
Protein Families:	Druggable Genome, Nuclear Hormone Receptor, Transcription Factors



[View online »](#)

Product images:

Anti-ESRRB / ERR Beta antibody IHC of human Lung, Small Cell Carcinoma.
Immunohistochemistry of formalin-fixed, paraffin-embedded tissue after heat-induced antigen retrieval.



Anti-ESRRB antibody IHC of human testis.
Immunohistochemistry of formalin-fixed, paraffin-embedded tissue after heat-induced antigen retrieval.