

## Product datasheet for **TA316715**

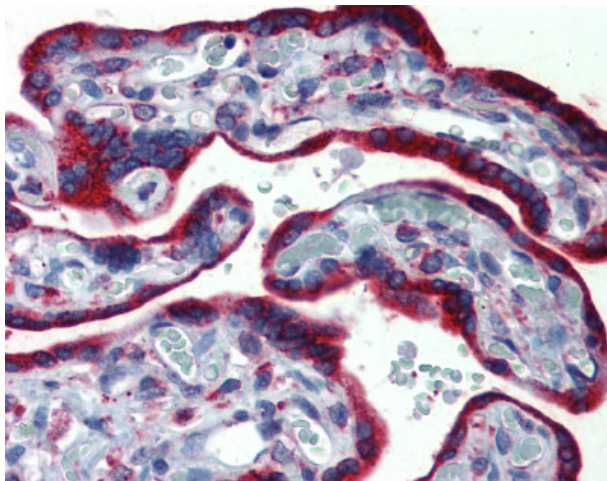
### **TXNDC4 (ERP44) Rabbit Polyclonal Antibody**

#### **Product data:**

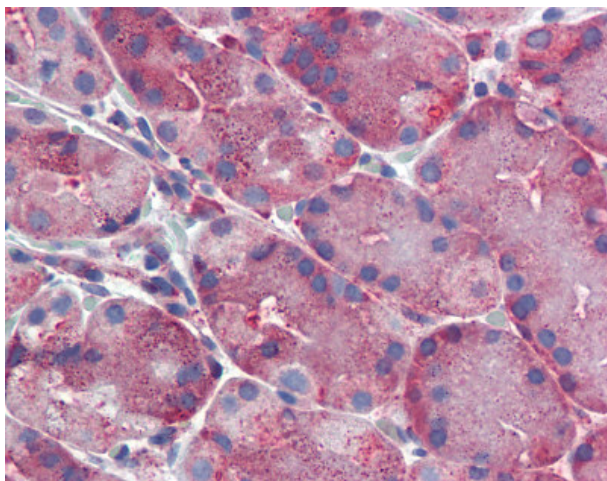
<b>Product Type:</b>	Primary Antibodies
<b>Applications:</b>	IHC
<b>Recommended Dilution:</b>	IHC-P (10 - 12.5 µg/ml)
<b>Reactivity:</b>	Bat, Bovine, Dog, Gorilla, Human, Monkey, Mouse, Pig, Rabbit, Rat, Gibbon, Hamster, Horse
<b>Host:</b>	Rabbit
<b>Isotype:</b>	IgG
<b>Clonality:</b>	Polyclonal
<b>Immunogen:</b>	ERP44 antibody was raised against synthetic 18 amino acid peptide from C-terminus of human ERP44 / TXNDC4. Percent identity with other species by BLAST analysis: Human, Gorilla, Gibbon, Monkey, Marmoset, Mouse, Rat, Dog, Bat, Bovine, Hamster, Elephant, Panda, Horse, Rabbit, Pig, Opossum, Platypus (100%); Zebrafish (89%); Turkey, Chicken (83%).
<b>Formulation:</b>	PBS, 0.1% sodium azide.
<b>Concentration:</b>	lot specific
<b>Purification:</b>	Immunoaffinity Chromatography
<b>Conjugation:</b>	Unconjugated
<b>Storage:</b>	Store at -20°C as received.
<b>Stability:</b>	Stable for 12 months from date of receipt.
<b>Gene Name:</b>	endoplasmic reticulum protein 44
<b>Database Link:</b>	<a href="#">NP_055866</a> <a href="#">Entrez Gene 76299 Mouse</a> <a href="#">Entrez Gene 298066 Rat</a> <a href="#">Entrez Gene 474781 Dog</a> <a href="#">Entrez Gene 100423317 Monkey</a> <a href="#">Entrez Gene 23071 Human</a> <a href="#">Q9BS26</a>
<b>Synonyms:</b>	PDIA10; TXNDC4
<b>Note:</b>	Specific for Human ERP44 / TXNDC4. BLAST analysis of the peptide immunogen showed no homology with other human proteins.
<b>Protein Families:</b>	Druggable Genome



[View online »](#)

**Product images:**

Anti-ERP44 / TXNDC4 antibody IHC of human, placenta. Immunohistochemistry of formalin-fixed, paraffin-embedded tissue after heat-induced antigen retrieval.



Anti-ERP44 / TXNDC4 antibody IHC of human, stomach. Immunohistochemistry of formalin-fixed, paraffin-embedded tissue after heat-induced antigen retrieval.