

Product datasheet for **TA316712**

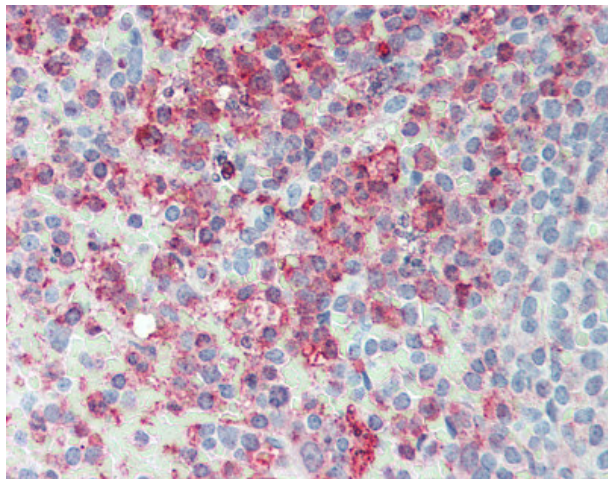
Endoplasmic reticulum metalloproteinase 1 (ERMP1) Rabbit Polyclonal Antibody

Product data:

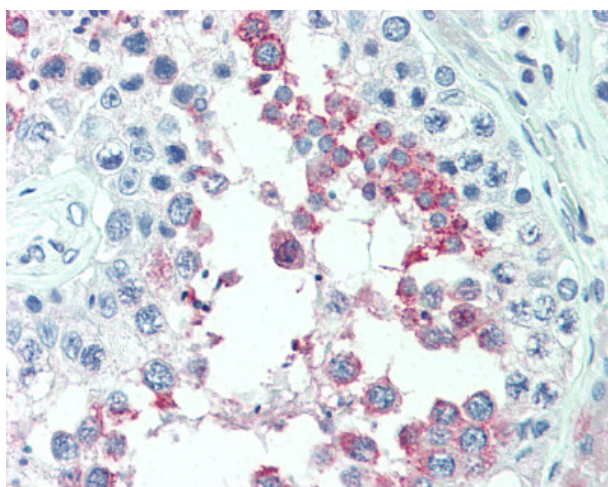
Product Type:	Primary Antibodies
Applications:	IHC
Recommended Dilution:	IHC-P (10 µg/ml)
Reactivity:	Chimpanzee, Gorilla, Human, Orang-Utan (Predicted: Monkey, Guinea Pig)
Host:	Rabbit
Isotype:	IgG
Clonality:	Polyclonal
Immunogen:	ERMP1 antibody was raised against synthetic 14 amino acid peptide from internal region of human ERMP1. Percent identity with other species by BLAST analysis: Human, Chimpanzee, Gorilla, Orangutan, Monkey (100%); Gibbon, Marmoset, Guinea pig (93%); Galago, Hamster, Elephant, Horse (86%).
Formulation:	PBS, 0.1% sodium azide.
Concentration:	lot specific
Purification:	Immunoaffinity Chromatography
Conjugation:	Unconjugated
Storage:	Store at -20°C as received.
Stability:	Stable for 12 months from date of receipt.
Gene Name:	endoplasmic reticulum metalloproteinase 1
Database Link:	NP_079172 Entrez Gene 717415 Monkey Entrez Gene 79956 Human Q7Z2K6
Synonyms:	bA207C16.3; FXNA; KIAA1815
Note:	Specific for Human ERMP1. BLAST analysis of the peptide immunogen showed no homology with other human proteins.
Protein Families:	Protease, Transmembrane



[View online »](#)

Product images:

Anti-ERMP1 antibody IHC of human spleen. Immunohistochemistry of formalin-fixed, paraffin-embedded tissue after heat-induced antigen retrieval.



Anti-ERMP1 antibody IHC of human testis. Immunohistochemistry of formalin-fixed, paraffin-embedded tissue after heat-induced antigen retrieval.