

## Product datasheet for **TA316711**

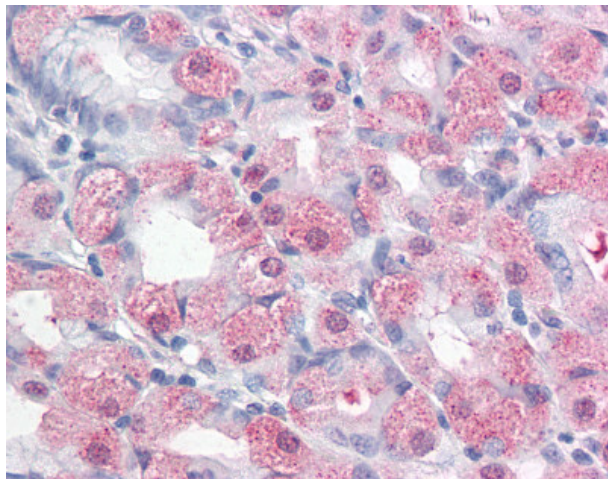
### Endoplasmic reticulum metalloproteinase 1 (ERMP1) Rabbit Polyclonal Antibody

#### Product data:

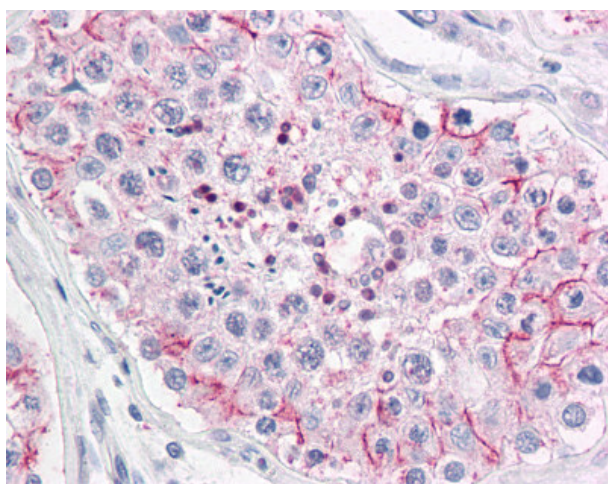
Product Type:	Primary Antibodies
Applications:	IHC
Recommended Dilution:	IHC-P (15 - 20 µg/ml)
Reactivity:	Gorilla, Human, Monkey, Gibbon, Orang-Utan (Predicted: Mouse, Rat, Hamster, Pig, Rabbit)
Host:	Rabbit
Isotype:	IgG
Clonality:	Polyclonal
Immunogen:	ERMP1 antibody was raised against synthetic 14 amino acid peptide from internal region of human ERMP1. Percent identity with other species by BLAST analysis: Human, Gorilla, Orangutan, Gibbon, Monkey, Marmoset (100%); Mouse, Rat, Hamster, Rabbit, Pig (93%); Dog, Bat, Elephant, Panda, Horse, Opossum (86%).
Formulation:	PBS, 0.1% sodium azide.
Concentration:	lot specific
Purification:	Immunoaffinity Chromatography
Conjugation:	Unconjugated
Storage:	Store at -20°C as received.
Stability:	Stable for 12 months from date of receipt.
Gene Name:	endoplasmic reticulum metalloproteinase 1
Database Link:	<a href="#">NP_079172</a> <a href="#">Entrez Gene 226090 MouseEntrez Gene 373544 RatEntrez Gene 717415 MonkeyEntrez Gene 79956 Human</a> <a href="#">Q7Z2K6</a>
Synonyms:	bA207C16.3; FXNA; KIAA1815
Note:	Specific for Human ERMP1. BLAST analysis of the peptide immunogen showed no homology with other human proteins.
Protein Families:	Protease, Transmembrane



[View online »](#)

**Product images:**

Anti-ERMP1 antibody IHC of human stomach. Immunohistochemistry of formalin-fixed, paraffin-embedded tissue after heat-induced antigen retrieval.



Anti-ERMP1 antibody IHC of human testis. Immunohistochemistry of formalin-fixed, paraffin-embedded tissue after heat-induced antigen retrieval.