

Product datasheet for **TA316704**

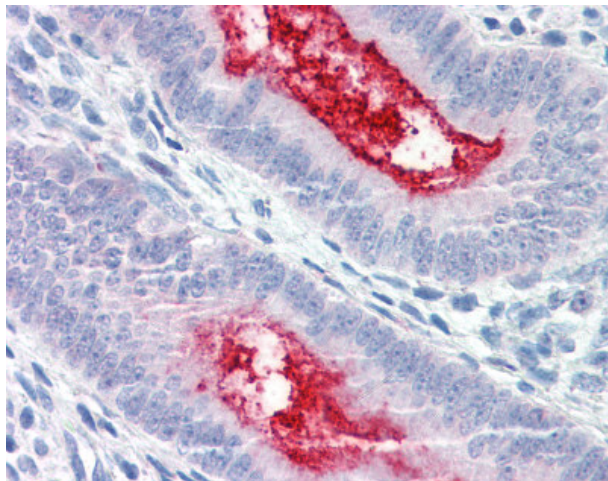
ENPP3 Rabbit Polyclonal Antibody

Product data:

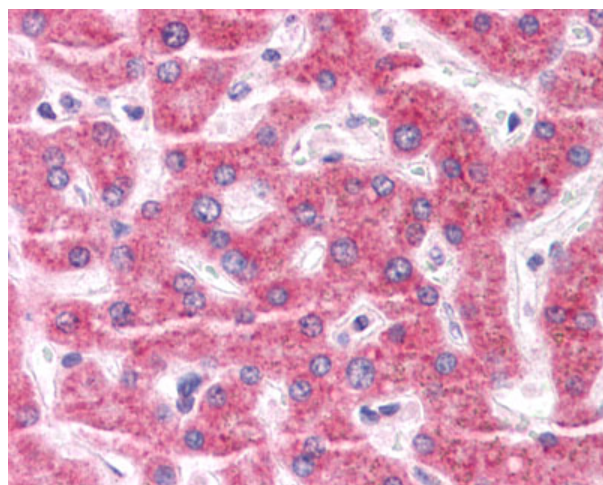
Product Type:	Primary Antibodies
Applications:	IHC
Recommended Dilution:	IHC-P (15 µg/ml)
Reactivity:	Dog, Human, Monkey, Gibbon, Orang-Utan (Predicted: Bovine, Horse, Pig)
Host:	Rabbit
Isotype:	IgG
Clonality:	Polyclonal
Immunogen:	ENPP3 / CD203c antibody was raised against synthetic 19 amino acid peptide from internal region of human ENPP3. Percent identity with other species by BLAST analysis: Human, Orangutan, Gibbon, Monkey, Marmoset, Dog (100%); Bovine, Horse, Pig (95%); Panda, Bat (84%).
Formulation:	PBS, 0.1% sodium azide.
Concentration:	lot specific
Purification:	Immunoaffinity Chromatography
Conjugation:	Unconjugated
Storage:	Store at -20°C as received.
Stability:	Stable for 12 months from date of receipt.
Gene Name:	ectonucleotide pyrophosphatase/phosphodiesterase 3
Database Link:	NP_005012 Entrez Gene 474820 Dog Entrez Gene 710232 Monkey Entrez Gene 5169 Human O14638
Synonyms:	B10; CD203c; NPP3; PD-IBETA; PDNP3
Note:	Specific for Human ENPP3. BLAST analysis of the peptide immunogen showed no homology with other human proteins.
Protein Families:	Druggable Genome, Transmembrane
Protein Pathways:	Metabolic pathways, Nicotinate and nicotinamide metabolism, Pantothenate and CoA biosynthesis, Purine metabolism, Riboflavin metabolism, Starch and sucrose metabolism



[View online »](#)

Product images:

Anti-ENPP3 antibody IHC of human uterus. Immunohistochemistry of formalin-fixed, paraffin-embedded tissue after heat-induced antigen retrieval.



Anti-ENPP3 antibody IHC of human liver. Immunohistochemistry of formalin-fixed, paraffin-embedded tissue after heat-induced antigen retrieval.