

## Product datasheet for **TA316698**

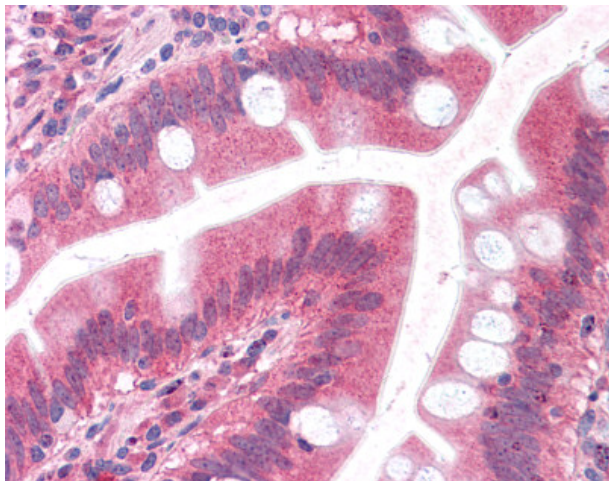
### Embigin homolog (EMB) Rabbit Polyclonal Antibody

#### Product data:

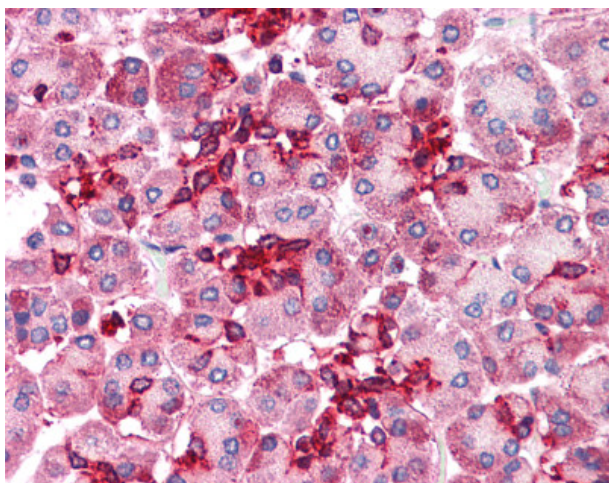
|                       |   |
|-----------------------|---|
| Product Type:         | Primary Antibodies  |
| Applications:         | IHC   |
| Recommended Dilution: | IHC-P (5 - 7.5 µg/ml)   |
| Reactivity:           | Gorilla, Human, Gibbon (Predicted: Monkey)  |
| Host:                 | Rabbit  |
| Isotype:              | IgG   |
| Clonality:            | Polyclonal  |
| Immunogen:            | EMB/ Embigin antibody was raised against synthetic 17 amino acid peptide from C-terminus of human EMB. Percent identity with other species by BLAST analysis: Human, Gorilla, Gibbon (100%); Monkey (94%); Marmoset, Elephant (88%); Dog, Rabbit (82%). |
| Formulation:          | PBS, 0.1% sodium azide.   |
| Concentration:        | lot specific  |
| Purification:         | Immunoaffinity Chromatography   |
| Conjugation:          | Unconjugated  |
| Storage:              | Store at -20°C as received.   |
| Stability:            | Stable for 12 months from date of receipt.  |
| Gene Name:            | embigin   |
| Database Link:        | <a href="#">NP_940851</a><br><a href="#">Entrez Gene 702068 Monkey</a> <a href="#">Entrez Gene 133418 Human</a><br><a href="#">Q6PCB8</a>   |
| Synonyms:             | GP70  |
| Note:                 | Specific for Human EMB. BLAST analysis of the peptide immunogen showed no homology with other human proteins.   |
| Protein Families:     | Transmembrane   |



[View online »](#)

**Product images:**

Anti-EMB antibody IHC of human small intestine. Immunohistochemistry of formalin-fixed, paraffin-embedded tissue after heat-induced antigen retrieval.



Anti-EMB antibody IHC of human pancreas. Immunohistochemistry of formalin-fixed, paraffin-embedded tissue after heat-induced antigen retrieval.