

## Product datasheet for **TA316684**

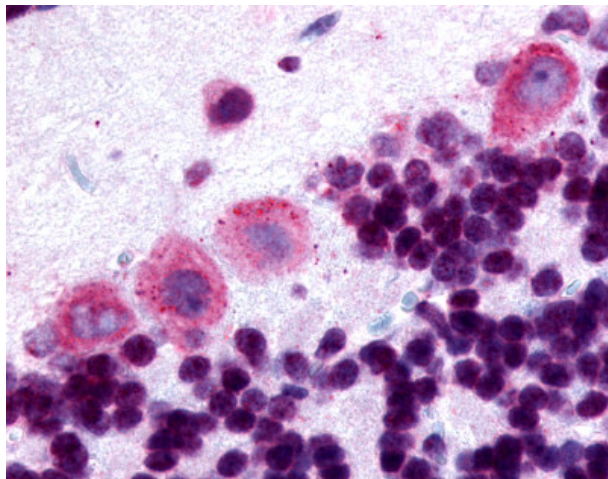
### Dopamine Receptor D5 (DRD5) Rabbit Polyclonal Antibody

#### Product data:

Product Type:	Primary Antibodies
Applications:	IHC
Recommended Dilution:	IHC-P (20 µg/ml)
Reactivity:	Dog, Gorilla, Human, Gibbon (Predicted: Monkey, Horse)
Host:	Rabbit
Isotype:	IgG
Clonality:	Polyclonal
Immunogen:	DRD5 / Dopamine Receptor D5 antibody was raised against synthetic 16 amino acid peptide from 3rd cytoplasmic domain of human DRD5 / Dopamine Receptor D5. Percent identity with other species by BLAST analysis: Human, Gorilla, Gibbon, Monkey, Dog (100%); Marmoset, Panda, Horse (94%); Mouse, Bovine, Hamster, Elephant, Pig (88%); Rat, Rabbit (81%).
Formulation:	PBS, 0.1% sodium azide.
Concentration:	lot specific
Purification:	Immunoaffinity Chromatography
Conjugation:	Unconjugated
Storage:	Store at -20°C as received.
Stability:	Stable for 12 months from date of receipt.
Gene Name:	dopamine receptor D5
Database Link:	<a href="#">NP_000789</a> <a href="#">Entrez Gene 488824 Dog</a> <a href="#">Entrez Gene 712862 Monkey</a> <a href="#">Entrez Gene 1816 Human</a> <a href="#">P21918</a>
Synonyms:	DBDR; DRD1B; DRD1L2
Note:	Specific for Human DRD5 / Dopamine Receptor D5. BLAST analysis of the peptide immunogen showed no homology with other human proteins.
Protein Families:	Druggable Genome, GPCR, Transmembrane
Protein Pathways:	Calcium signaling pathway, Neuroactive ligand-receptor interaction



[View online »](#)

**Product images:**

Anti-DRD5 / Dopamine Receptor D5 antibody IHC of human brain, cerebellum. Immunohistochemistry of formalin-fixed, paraffin-embedded tissue after heat-induced antigen retrieval.