

Product datasheet for **TA316683**

Dopamine Receptor D3 (DRD3) Rabbit Polyclonal Antibody

Product data:

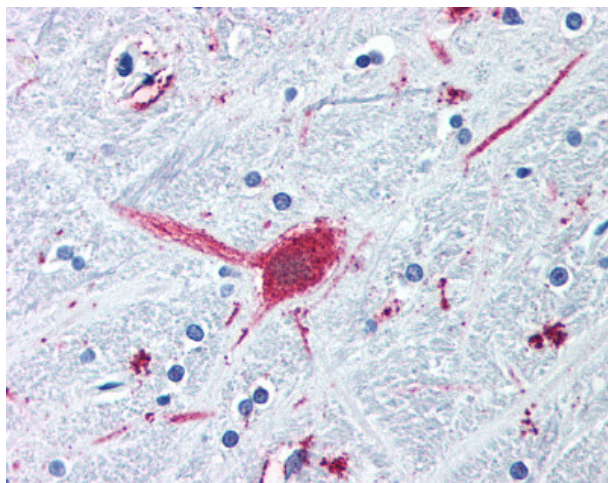
Product Type:	Primary Antibodies
Applications:	IHC
Recommended Dilution:	IHC-P (16 - 32 µg/ml)
Reactivity:	Bat, Chimpanzee, Dog, Human, Monkey, Mouse, Pig, Gibbon, Hamster, Horse (Predicted: Rat, Rabbit)
Host:	Rabbit
Isotype:	IgG
Clonality:	Polyclonal
Immunogen:	DRD3 / Dopamine Receptor D3 antibody was raised against synthetic 18 amino acid peptide from 3rd cytoplasmic domain of human DRD3 / Dopamine Receptor D3. Percent identity with other species by BLAST analysis: Human, Chimpanzee, Gibbon, Monkey, Marmoset, Mouse, Dog, Bat, Hamster, Panda, Horse, Pig (100%); Rat, Rabbit (94%); Elephant (89%).
Formulation:	PBS, 0.1% sodium azide.
Concentration:	lot specific
Purification:	Immunoaffinity Chromatography
Conjugation:	Unconjugated
Storage:	Store at -20°C as received.
Stability:	Stable for 12 months from date of receipt.
Gene Name:	dopamine receptor D3
Database Link:	NP_000787 Entrez Gene 13490 Mouse Entrez Gene 29238 Rat Entrez Gene 487984 Dog Entrez Gene 100425047 Monkey Entrez Gene 1814 Human P35462
Synonyms:	D3DR; ETM1; FET1
Note:	Specific for Human DRD3 / Dopamine Receptor D3. BLAST analysis of the peptide immunogen showed no homology with other human proteins.
Protein Families:	Druggable Genome, GPCR, Transmembrane



[View online »](#)

Protein Pathways: Neuroactive ligand-receptor interaction

Product images:



Anti-DRD3 / Dopamine Receptor D3 antibody IHC of human brain, globus pallidus. Immunohistochemistry of formalin-fixed, paraffin-embedded tissue after heat-induced antigen retrieval.