

Product datasheet for **TA316681**

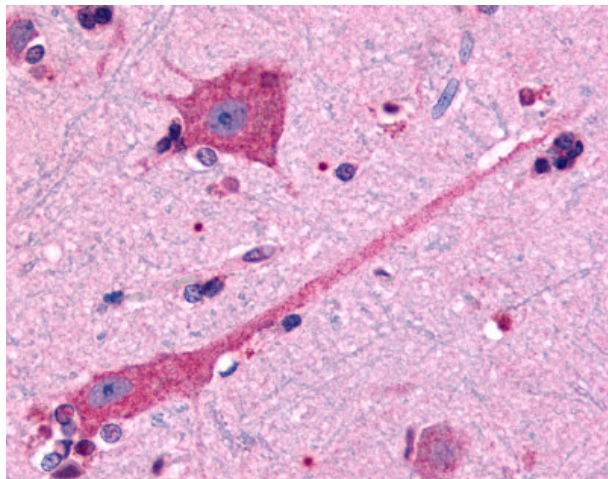
Dopamine D2 Receptor (DRD2) Rabbit Polyclonal Antibody

Product data:

Product Type:	Primary Antibodies
Applications:	IHC
Recommended Dilution:	IHC-P (10 µg/ml)
Reactivity:	Bat, Bovine, Chimpanzee, Dog, Gorilla, Human, Rabbit, Horse (Predicted: Monkey, Pig)
Host:	Rabbit
Isotype:	IgG
Clonality:	Polyclonal
Immunogen:	DRD2 / Dopamine Receptor D2 antibody was raised against synthetic 16 amino acid peptide from 3rd cytoplasmic domain of human DRD2. Percent identity with other species by BLAST analysis: Human, Chimpanzee, Gorilla, Ferret, Bat, Bovine, Dog, Elephant, Panda, Horse, Rabbit (100%); Gibbon, Monkey, Pig (94%); Marmoset (81%).
Formulation:	PBS, 0.1% sodium azide.
Concentration:	lot specific
Purification:	Immunoaffinity Chromatography
Conjugation:	Unconjugated
Storage:	Store at -20°C as received.
Stability:	Stable for 12 months from date of receipt.
Gene Name:	dopamine receptor D2
Database Link:	NP_000786 Entrez Gene 403701 Dog Entrez Gene 694181 Monkey Entrez Gene 1813 Human P14416
Synonyms:	D2DR; D2R
Note:	Specific for Human DRD2. BLAST analysis of the peptide immunogen showed no homology with other human proteins.
Protein Families:	Druggable Genome, GPCR, Transmembrane
Protein Pathways:	Gap junction, Neuroactive ligand-receptor interaction



[View online »](#)

Product images:

Anti-DRD2 antibody IHC of human brain, neurons and glia. Immunohistochemistry of formalin-fixed, paraffin-embedded tissue after heat-induced antigen retrieval.