

Product datasheet for **TA316648**

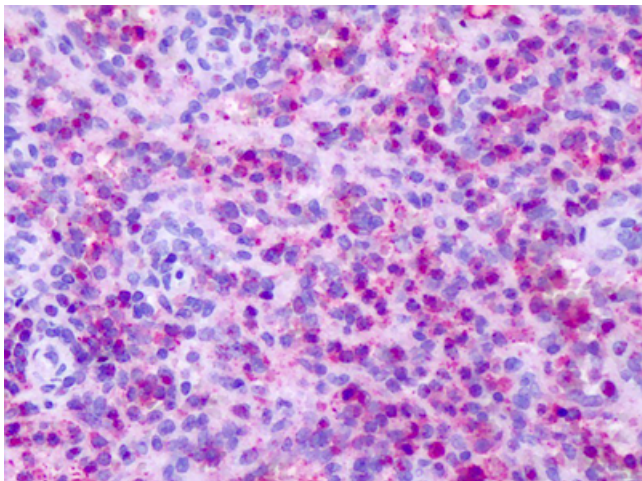
CXCR1 Rabbit Polyclonal Antibody

Product data:

Product Type:	Primary Antibodies
Applications:	IHC
Recommended Dilution:	IHC-P (16 µg/ml)
Reactivity:	Chimpanzee, Gorilla, Human (Predicted: Monkey)
Host:	Rabbit
Isotype:	IgG
Clonality:	Polyclonal
Immunogen:	CXCR1 antibody was raised against synthetic 17 amino acid peptide from C-terminus of human CXCR1. Percent identity with other species by BLAST analysis: Human, Chimpanzee, Gorilla (100%); Orangutan, Monkey, Marmoset (94%); Gibbon, Rabbit (88%).
Formulation:	PBS, 0.1% sodium azide.
Concentration:	lot specific
Purification:	Immunoaffinity Chromatography
Conjugation:	Unconjugated
Storage:	Store at -20°C as received.
Stability:	Stable for 12 months from date of receipt.
Gene Name:	C-X-C motif chemokine receptor 1
Database Link:	NP_000625 Entrez Gene 692074 Monkey Entrez Gene 3577 Human P25024
Synonyms:	C-C; C-C-CKR-1; CD128; CD181; CDw128a; CKR-1; CMKAR1; IL8R1; IL8RA; IL8RBA
Note:	Specific for Human CXCR1. BLAST analysis of the peptide immunogen showed no homology with other human proteins.
Protein Families:	Druggable Genome, GPCR, Transmembrane
Protein Pathways:	Chemokine signaling pathway, Cytokine-cytokine receptor interaction, Endocytosis, Epithelial cell signaling in Helicobacter pylori infection



[View online »](#)

Product images:

Anti-CXCR1 antibody IHC of human spleen, neutrophils. Immunohistochemistry of formalin-fixed, paraffin-embedded tissue after heat-induced antigen retrieval. Antibody dilution 16 ug/ml.