

Product datasheet for **TA316638**

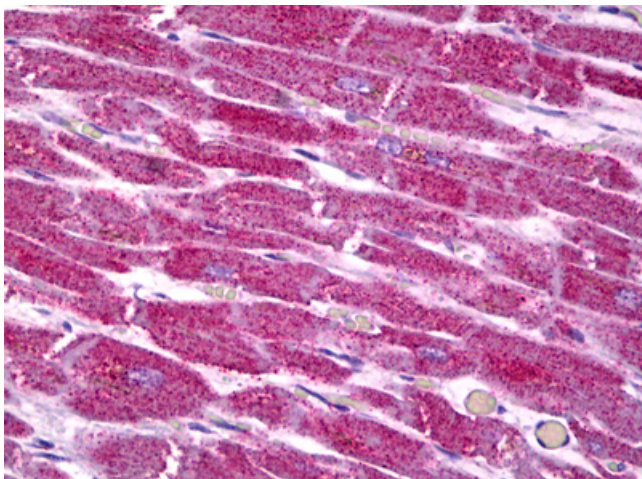
COX7A2 Rabbit Polyclonal Antibody

Product data:

Product Type:	Primary Antibodies
Applications:	IHC
Recommended Dilution:	ELISA (1:10000), IHC-P (1:50), WB (1:500 - 1:1000)
Reactivity:	Human, Mouse, Rat
Host:	Rabbit
Isotype:	IgG
Clonality:	Polyclonal
Immunogen:	COX7A2 antibody was raised against synthetic peptide from human COX7S/A2 (aa1-50).
Formulation:	PBS (without Mg ²⁺ , Ca ²⁺), pH 7.4, 150 mM sodium chloride, 0.02% sodium azide, 50% glycerol
Concentration:	lot specific
Purification:	Immunoaffinity Chromatography
Conjugation:	Unconjugated
Storage:	Store at -20°C as received.
Stability:	Stable for 12 months from date of receipt.
Gene Name:	cytochrome c oxidase subunit 7A2
Database Link:	NP_001856 Entrez Gene 12866 Mouse Entrez Gene 29507 Rat Entrez Gene 1347 Human P14406
Synonyms:	COX7AL; COX7AL1; COXVIIa-L; COXVIIAL; VIIAL
Note:	COX7S/A2 Antibody detects endogenous levels of total COX7S/A2 protein.
Protein Families:	Transmembrane
Protein Pathways:	Alzheimer's disease, Cardiac muscle contraction, Huntington's disease, Oxidative phosphorylation, Parkinson's disease



[View online »](#)

Product images:

Anti-COX7A2 antibody IHC of human heart. Immunohistochemistry of formalin-fixed, paraffin-embedded tissue after heat-induced antigen retrieval. Antibody dilution 1:50.