

Product datasheet for **TA316635**

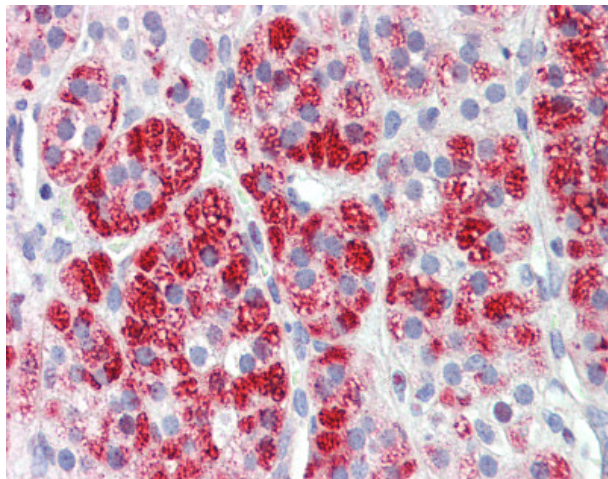
Clathrin heavy chain (CLTC) Goat Polyclonal Antibody

Product data:

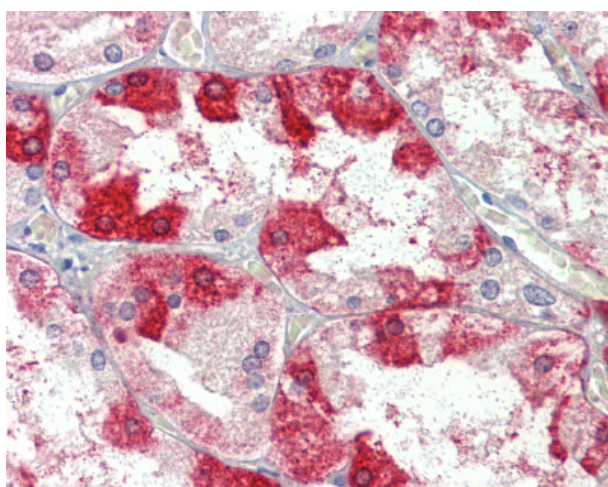
| | |
|-----------------------|---|
| Product Type: | Primary Antibodies |
| Applications: | IHC |
| Recommended Dilution: | IHC-P (3.75 µg/ml) |
| Reactivity: | Bat, Bovine, Chicken, Dog, Xenopus, Gorilla, Human, Monkey, Mouse, Pig, Rabbit, Rat, Zebrafish, Gibbon, Horse |
| Host: | Goat |
| Clonality: | Polyclonal |
| Immunogen: | CLTC / Clathrin Heavy Chain antibody was raised against synthetic peptide C-ESLRKEEQATETQ from an internal region (near C-terminus) of human CLTC (NP_004850.1). Percent identity by BLAST analysis: Human, Gorilla, Gibbon, Monkey, Marmoset, Mouse, Rat, Elephant, Panda, Dog, Bat, Bovine, Horse, Rabbit, Pig, Opossum, Turkey, Chicken, Platypus, Xenopus, Zebrafish (100%); Stickleback (93%); Pufferfish (86%). |
| Formulation: | Tris-buffered saline, pH 7.3, 0.5% BSA, 0.02% sodium azide |
| Concentration: | lot specific |
| Purification: | Immunoaffinity Chromatography |
| Conjugation: | Unconjugated |
| Storage: | Store at -20°C as received. |
| Stability: | Stable for 12 months from date of receipt. |
| Gene Name: | clathrin heavy chain |
| Database Link: | NP_004850 Entrez Gene 54241 Rat Entrez Gene 67300 Mouse Entrez Gene 480578 Dog Entrez Gene 711563 Monkey Entrez Gene 1213 Human Q00610 |
| Synonyms: | CHC; CHC17; CLH-17; CLTCL2; Hc |
| Note: | Specific for Human CLTC. |
| Protein Pathways: | Endocytosis, Huntington's disease, Lysosome |



[View online »](#)

Product images:

Anti-CLTC antibody IHC of human adrenal. Immunohistochemistry of formalin-fixed, paraffin-embedded tissue after heat-induced antigen retrieval. Antibody concentration 3.75 ug/ml.



Anti-CLTC antibody IHC of human kidney. Immunohistochemistry of formalin-fixed, paraffin-embedded tissue after heat-induced antigen retrieval. Antibody concentration 3.75 ug/ml.