

## Product datasheet for **TA316627**

### Muscarinic Acetylcholine Receptor M3 (CHRM3) Rabbit Polyclonal Antibody

#### Product data:

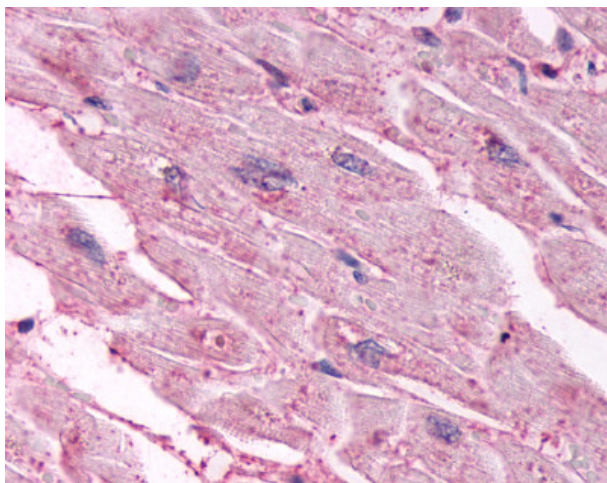
Product Type:	Primary Antibodies
Applications:	IHC
Recommended Dilution:	IHC-P (72 µg/ml)
Reactivity:	Gorilla, Human, Monkey, Gibbon, Orang-Utan (Predicted: Mouse, Rat, Bovine, Dog, Hamster, Horse, Pig, Rabbit, Sheep, Guinea Pig)
Host:	Rabbit
Isotype:	IgG
Clonality:	Polyclonal
Immunogen:	CHRM3 / M3 antibody was raised against synthetic 19 amino acid peptide from C-terminus of human CHRM3 / M3. Percent identity with other species by BLAST analysis: Human, Gorilla, Orangutan, Gibbon, Monkey (100%); Chimpanzee, Mouse, Rat, Sheep, Hamster, Elephant, Dog, Bovine, Horse, Rabbit, Pig, Guinea pig (95%); Opossum, Turkey, Chicken, Lizard (89%).
Formulation:	PBS, 0.1% sodium azide.
Concentration:	lot specific
Purification:	Immunoaffinity Chromatography
Conjugation:	Unconjugated
Storage:	Store at -20°C as received.
Stability:	Stable for 12 months from date of receipt.
Gene Name:	cholinergic receptor muscarinic 3
Database Link:	<a href="#">NP_000731</a> <a href="#">Entrez Gene 12671 Mouse</a> <a href="#">Entrez Gene 24260 Rat</a> <a href="#">Entrez Gene 403827 Dog</a> <a href="#">Entrez Gene 708901 Monkey</a> <a href="#">Entrez Gene 1131 Human</a> <a href="#">P20309</a>
Synonyms:	EGBRS; HM3
Note:	Specific for Human CHRM3 / M3. BLAST analysis of the peptide immunogen showed no homology with other human proteins.
Protein Families:	Druggable Genome, GPCR, Transmembrane



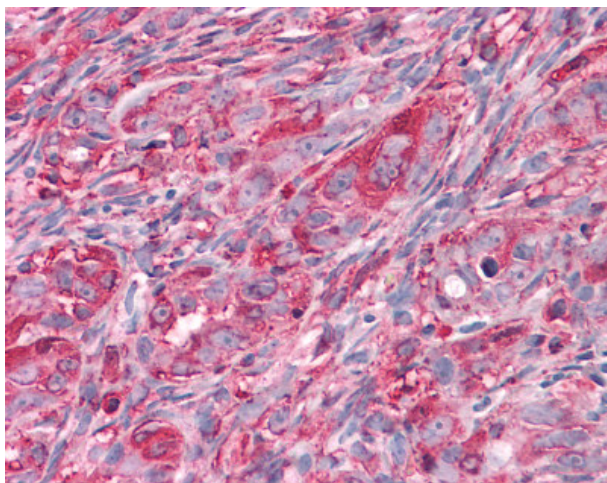
[View online »](#)

**Protein Pathways:** Calcium signaling pathway, Neuroactive ligand-receptor interaction, Regulation of actin cytoskeleton

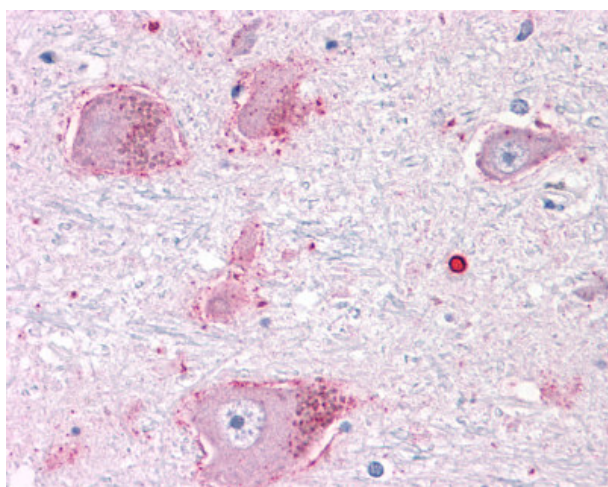
**Product images:**



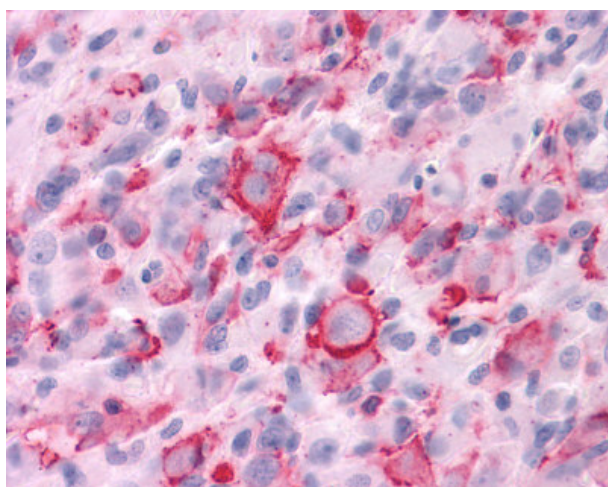
Anti-CHRM3 / M3 antibody IHC of human heart. Immunohistochemistry of formalin-fixed, paraffin-embedded tissue after heat-induced antigen retrieval.



Anti-CHRM3 / M3 antibody IHC of human Ovary, Carcinoma. Immunohistochemistry of formalin-fixed, paraffin-embedded tissue after heat-induced antigen retrieval.



Anti-CHRM3 / M3 antibody IHC of human brain, neurons and glia. Immunohistochemistry of formalin-fixed, paraffin-embedded tissue after heat-induced antigen retrieval.



Anti-CHRM3 / M3 antibody IHC of human Brain, Glioblastoma. Immunohistochemistry of formalin-fixed, paraffin-embedded tissue after heat-induced antigen retrieval.