

Product datasheet for **TA316617**

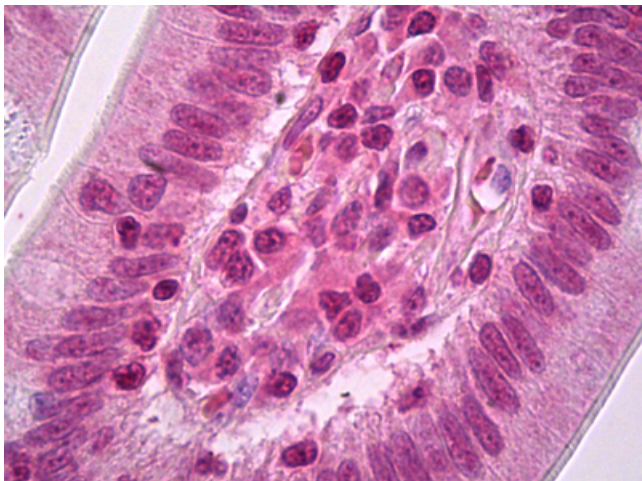
CDK1 Mouse Monoclonal Antibody [Clone ID: 26E11]

Product data:

Product Type:	Primary Antibodies
Clone Name:	26E11
Applications:	IHC
Recommended Dilution:	ELISA, IHC-P (1:200), IP, WB (1:1000)
Reactivity:	Human, Mouse, Rat
Host:	Mouse
Isotype:	IgG2a, kappa
Clonality:	Monoclonal
Immunogen:	CDK1 / CDC2 antibody was raised against recombinant human protein purified from E. coli (His-cdc2).
Formulation:	HEPES with 0.15M NaCl, 0.01% BSA, 0.03% sodium azide, and 50% glycerol
Purification:	Ammonium Sulfate Precipitation
Conjugation:	Unconjugated
Storage:	Store at -20°C as received.
Stability:	Stable for 12 months from date of receipt.
Gene Name:	cyclin-dependent kinase 1
Database Link:	NP_001777 Entrez Gene 12534 Mouse Entrez Gene 54237 Rat Entrez Gene 983 Human P06493
Synonyms:	CDC2; CDC28A; P34CDC2
Protein Families:	Druggable Genome, Protein Kinase, Stem cell - Pluripotency
Protein Pathways:	Cell cycle, Gap junction, Oocyte meiosis, p53 signaling pathway, Progesterone-mediated oocyte maturation



[View online »](#)

Product images:

Anti-Cdc2 antibody IHC of human small intestine. Immunohistochemistry of formalin-fixed, paraffin-embedded tissue after heat-induced antigen retrieval. Antibody dilution 1:200.