

## Product datasheet for **TA316615**

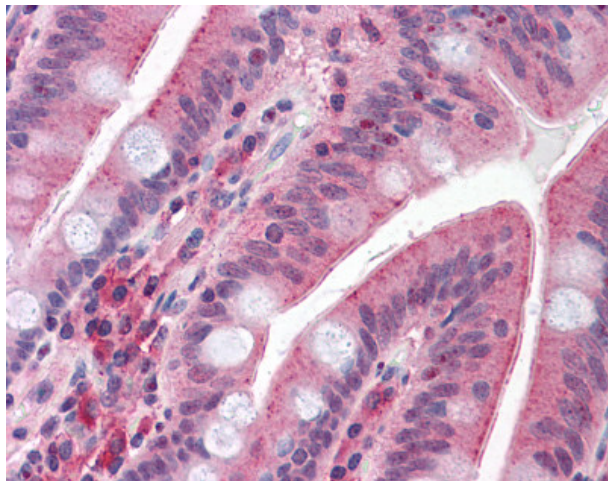
### MUPCDH (CDHR5) Rabbit Polyclonal Antibody

#### Product data:

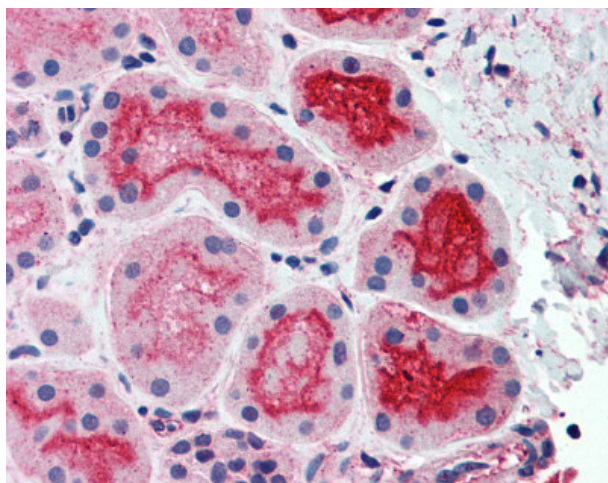
Product Type:	Primary Antibodies
Applications:	IHC
Recommended Dilution:	IHC-P (2.5 - 5 µg/ml)
Reactivity:	Bovine, Gorilla, Human, Monkey, Pig, Rabbit
Host:	Rabbit
Isotype:	IgG
Clonality:	Polyclonal
Immunogen:	CDHR5 / MUCDHL antibody was raised against synthetic 17 amino acid peptide from cytoplasmic domain of human CDHR5 / MUPCDH. Percent identity with other species by BLAST analysis: Human, Gorilla, Monkey, Bovine, Elephant, Panda, Rabbit, Pig (100%).
Formulation:	PBS, 0.1% sodium azide.
Concentration:	lot specific
Purification:	Immunoaffinity Chromatography
Conjugation:	Unconjugated
Storage:	Store at -20°C as received.
Stability:	Stable for 12 months from date of receipt.
Gene Name:	cadherin related family member 5
Database Link:	<a href="#">NP_112555</a> <a href="#">Entrez Gene 699464 Monkey</a> <a href="#">Entrez Gene 53841 Human</a> <a href="#">Q9HBB8</a>
Synonyms:	FLJ20219; MU-PCDH
Note:	Specific for Human CDHR5 / MUPCDH. BLAST analysis of the peptide immunogen showed no homology with other human proteins.
Protein Families:	Transmembrane



[View online »](#)

**Product images:**

Anti-CDHR5 / MUPCDH antibody IHC of human small intestine. Immunohistochemistry of formalin-fixed, paraffin-embedded tissue after heat-induced antigen retrieval.



Anti-CDHR5 / MUPCDH antibody IHC of human kidney. Immunohistochemistry of formalin-fixed, paraffin-embedded tissue after heat-induced antigen retrieval.