

Product datasheet for **TA316598**

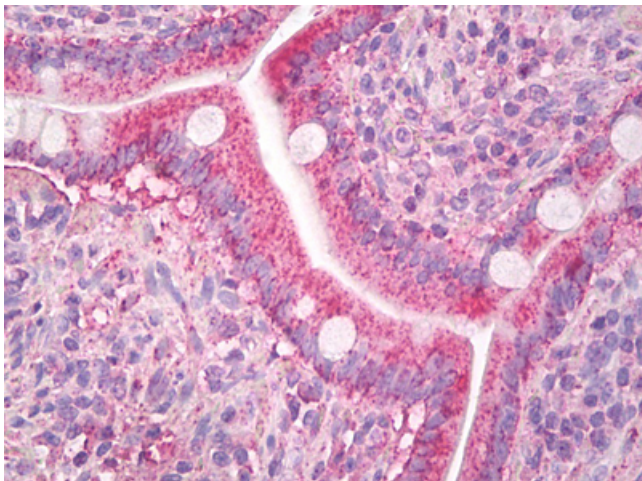
MCP2 (CCL8) Mouse Monoclonal Antibody

Product data:

Product Type:	Primary Antibodies
Applications:	IHC
Recommended Dilution:	ELISA (1 - 2 µg/ml), IHC-P (10 µg/ml), WB (0.25 - 0.5 µg/ml)
Reactivity:	Human
Host:	Mouse
Isotype:	IgG1, kappa
Clonality:	Monoclonal
Immunogen:	CCL8 / MCP2 antibody was raised against e.coli derived recombinant Human MCP-2 cprresponding to amino acids 24-99 of P80075.
Formulation:	Lyophilized from PBS
Purification:	Protein A Column
Conjugation:	Unconjugated
Storage:	Store at -20°C as received.
Stability:	Stable for 12 months from date of receipt.
Gene Name:	C-C motif chemokine ligand 8
Database Link:	NP_005614 Entrez Gene 6355 Human P80075
Synonyms:	HC14; MCP-2; MCP2; SCYA8; SCYA10
Note:	Specific for Human MCP-2
Protein Families:	Druggable Genome, Secreted Protein
Protein Pathways:	Chemokine signaling pathway, Cytokine-cytokine receptor interaction, NOD-like receptor signaling pathway



[View online »](#)

Product images:

Anti-MCP-2 / CCL8 antibody IHC of human small intestine. Immunohistochemistry of formalin-fixed, paraffin-embedded tissue after heat-induced antigen retrieval. Antibody dilution 10 ug/ml.