

## Product datasheet for **TA316588**

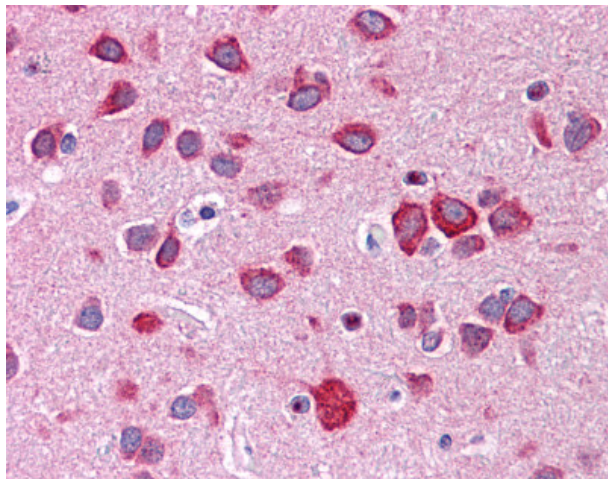
### Calneuron 1 (CALN1) Rabbit Polyclonal Antibody

#### Product data:

Product Type:	Primary Antibodies
Applications:	IHC
Recommended Dilution:	ELISA, IHC-P (2.5 µg/ml), WB (1 - 2 µg/ml)
Reactivity:	Human, Mouse, Rat
Host:	Rabbit
Isotype:	IgG
Clonality:	Polyclonal
Immunogen:	Calneuron-1 / CALN1 antibody was raised against a 16 amino acid peptide near the amino terminus of human CaBP8.
Formulation:	PBS, 0.02% sodium azide
Purification:	Immunoaffinity Chromatography
Conjugation:	Unconjugated
Storage:	Store at -20°C as received.
Stability:	Stable for 12 months from date of receipt.
Gene Name:	calneuron 1
Database Link:	<a href="#">NP_113656</a> <a href="#">Entrez Gene 140904 MouseEntrez Gene 363909 RatEntrez Gene 83698 Human Q9BXU9</a>
Synonyms:	CABP8
Note:	Specific for Human CALN1
Protein Families:	Transmembrane



[View online »](#)

**Product images:**

Anti-CALN1 / Calneuron-1 antibody IHC of human brain, cortex. Immunohistochemistry of formalin-fixed, paraffin-embedded tissue after heat-induced antigen retrieval. Antibody concentration 2.5 ug/ml.