

Product datasheet for **TA316587**

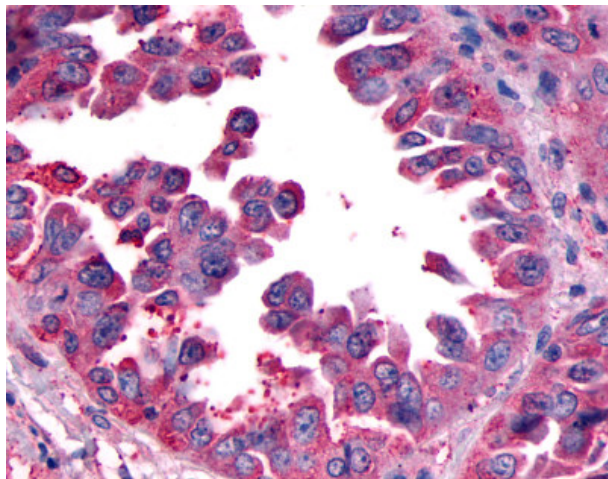
CRLR (CALCRL) Rabbit Polyclonal Antibody

Product data:

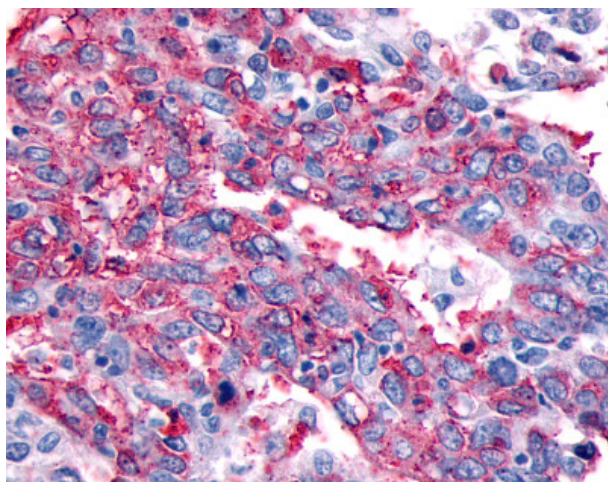
Product Type:	Primary Antibodies
Applications:	IHC
Recommended Dilution:	IHC-P (16 µg/ml)
Reactivity:	Gorilla, Human, Gibbon, Orang-Utan (Predicted: Monkey, Mouse, Rabbit)
Host:	Rabbit
Isotype:	IgG
Clonality:	Polyclonal
Immunogen:	CALCRL / CGRP Receptor antibody was raised against synthetic 15 amino acid peptide from N-terminal extracellular domain of human CALCRL. Percent identity with other species by BLAST analysis: Human, Gorilla, Orangutan, Gibbon, Monkey (100%); Marmoset, Mouse, Rabbit (93%); Rat, Panda, Dog, Horse, Pig (87%); Goat, Bovine (80%).
Formulation:	PBS, 0.1% sodium azide.
Concentration:	lot specific
Purification:	Immunoaffinity Chromatography
Conjugation:	Unconjugated
Storage:	Store at -20°C as received.
Stability:	Stable for 12 months from date of receipt.
Gene Name:	calcitonin receptor like receptor
Database Link:	NP_005786 Entrez Gene 54598 Mouse Entrez Gene 708187 Monkey Entrez Gene 10203 Human Q16602
Synonyms:	CGRPR; CRLR
Note:	Specific for Human CALCRL. BLAST analysis of the peptide immunogen showed no homology with other human proteins.
Protein Families:	Druggable Genome, GPCR, Transmembrane
Protein Pathways:	Neuroactive ligand-receptor interaction, Vascular smooth muscle contraction



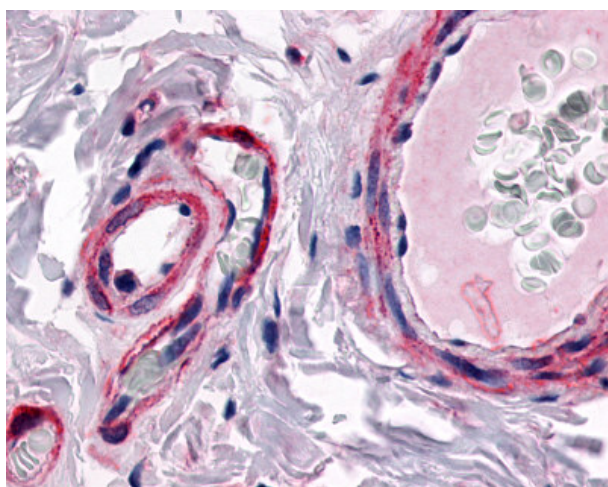
[View online »](#)

Product images:

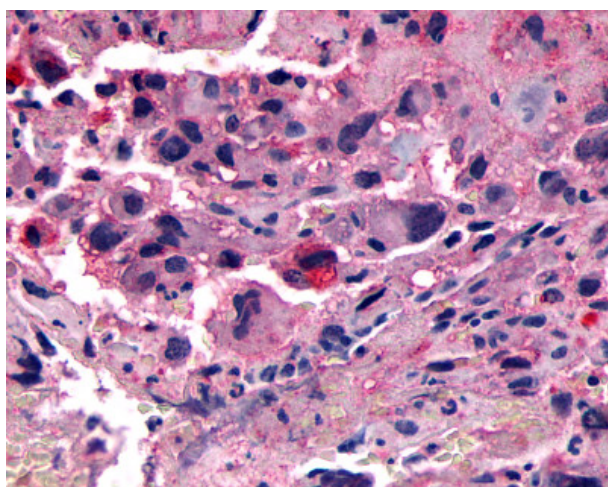
Anti-CALCRL / CGRP Receptor antibody IHC of human Lung, Non-Small Cell Carcinoma. Immunohistochemistry of formalin-fixed, paraffin-embedded tissue after heat-induced antigen retrieval.



Anti-CALCRL / CGRP Receptor antibody IHC of human Ovary, Carcinoma. Immunohistochemistry of formalin-fixed, paraffin-embedded tissue after heat-induced antigen retrieval.



Anti-CALCRL antibody IHC of human colon, submucosal vessels. Immunohistochemistry of formalin-fixed, paraffin-embedded tissue after heat-induced antigen retrieval.



Anti-CALCRL / CGRP Receptor antibody IHC of human Bone, Osteosarcoma. Immunohistochemistry of formalin-fixed, paraffin-embedded tissue after heat-induced antigen retrieval.