

Product datasheet for **TA316586**

CRLR (CALCRL) Rabbit Polyclonal Antibody

Product data:

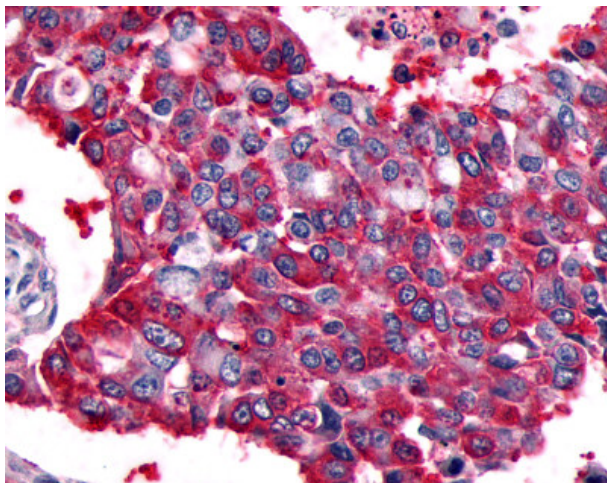
Product Type:	Primary Antibodies
Applications:	IHC
Recommended Dilution:	IHC-P (34 µg/ml)
Reactivity:	Bovine, Dog, Xenopus, Gorilla, Goat, Human, Monkey, Pig, Rabbit, Rat, Gibbon, Hamster, Horse, Orang-Utan (Predicted: Mouse, Bat, Zebrafish, Guinea Pig)
Host:	Rabbit
Isotype:	IgG
Clonality:	Polyclonal
Immunogen:	CALCRL / CGRP Receptor antibody was raised against synthetic 16 amino acid peptide from 3rd cytoplasmic domain of human CALCRL. Percent identity with other species by BLAST analysis: Human, Gorilla, Orangutan, Gibbon, Monkey, Marmoset, Rat, Goat, Hamster, Panda, Dog, Bovine, Horse, Rabbit, Pig, Opossum, Xenopus (100%); Mouse, Elephant, Bat, Guinea pig, Stickleback, Pufferfish, Zebrafish (94%); Turkey, Chicken (81%).
Formulation:	PBS, 0.1% sodium azide.
Concentration:	lot specific
Purification:	Immunoaffinity Chromatography
Conjugation:	Unconjugated
Storage:	Store at -20°C as received.
Stability:	Stable for 12 months from date of receipt.
Gene Name:	calcitonin receptor like receptor
Database Link:	NP_005786 Entrez Gene 25029 RatEntrez Gene 54598 MouseEntrez Gene 488438 DogEntrez Gene 708187 MonkeyEntrez Gene 10203 Human Q16602
Synonyms:	CGRPR; CRLR
Note:	Specific for Human CALCRL. BLAST analysis of the peptide immunogen showed no homology with other human proteins, except CALCR (56%).
Protein Families:	Druggable Genome, GPCR, Transmembrane



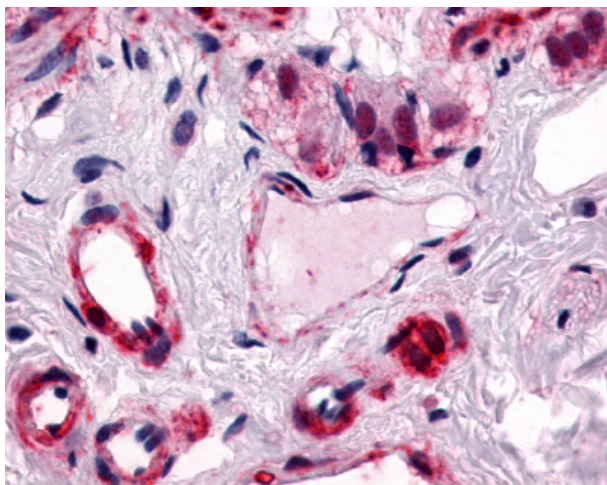
[View online »](#)

Protein Pathways: Neuroactive ligand-receptor interaction, Vascular smooth muscle contraction

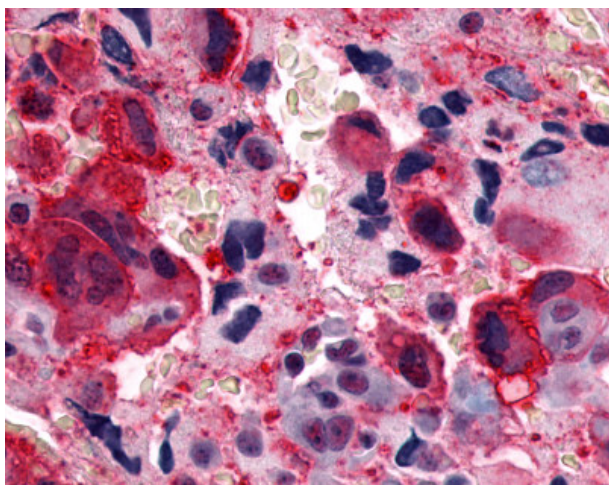
Product images:



Anti-CALCRL / CGRP Receptor antibody IHC of human Lung, Non-Small Cell Carcinoma. Immunohistochemistry of formalin-fixed, paraffin-embedded tissue after heat-induced antigen retrieval.



Anti-CALCRL antibody IHC of human colon, submucosal plexus and submucosal vessels. Immunohistochemistry of formalin-fixed, paraffin-embedded tissue after heat-induced antigen retrieval.



Anti-CALCRL / CGRP Receptor antibody IHC of human Bone, Osteosarcoma.
Immunohistochemistry of formalin-fixed, paraffin-embedded tissue after heat-induced antigen retrieval.