

## Product datasheet for **TA316579**

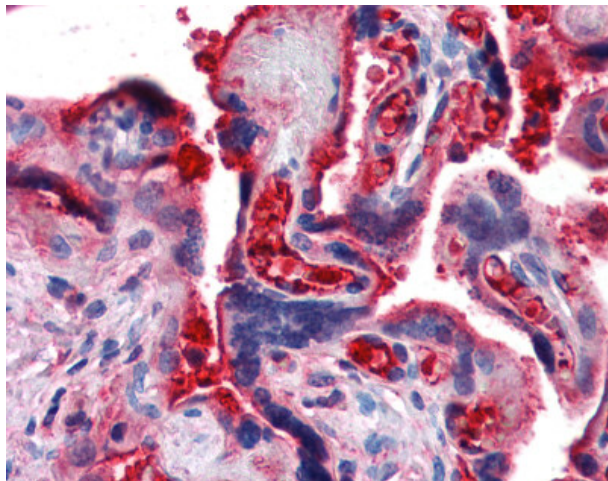
### Complement C4B (C4B) Chicken Polyclonal Antibody

#### Product data:

Product Type:	Primary Antibodies
Applications:	IHC
Recommended Dilution:	ELISA, Flo (0.1 µg/10E6 cells), IHC-P (20 µg/ml), WB
Reactivity:	Human
Host:	Chicken
Isotype:	IgY
Clonality:	Polyclonal
Immunogen:	Complement C4B antibody was raised against purified human complement C4b.
Formulation:	PBS, 0.02% sodium azide.
Concentration:	lot specific
Purification:	Purified
Conjugation:	Unconjugated
Storage:	Store at -20°C as received.
Stability:	Stable for 12 months from date of receipt.
Gene Name:	complement component 4B (Chido blood group)
Database Link:	<a href="#">NP_001002029</a> <a href="#">Entrez Gene 721 Human</a> <a href="#">POCOL4</a>
Synonyms:	C4B1; C4B2; C4B3; C4B5; C4B12; C4BD; C4B_2; C4F; CH; CO4; CPAMD3
Note:	Specific for Anti-Human Complement Component C4b polyclonal antibody reacts with human C4b. C4 is a 210 KDa trimeric glycoprotein containing three polypeptide chains alpha, beta, and gamma with respective molecular weights of 93KDa, 75KDa and 33 KDa. C4 breaks do ...
Protein Pathways:	Complement and coagulation cascades, Systemic lupus erythematosus



[View online »](#)

**Product images:**

Anti-C4B antibody IHC of human placenta. Immunohistochemistry of formalin-fixed, paraffin-embedded tissue after heat-induced antigen retrieval. Antibody concentration 20 ug/ml.