

Product datasheet for **TA316577**

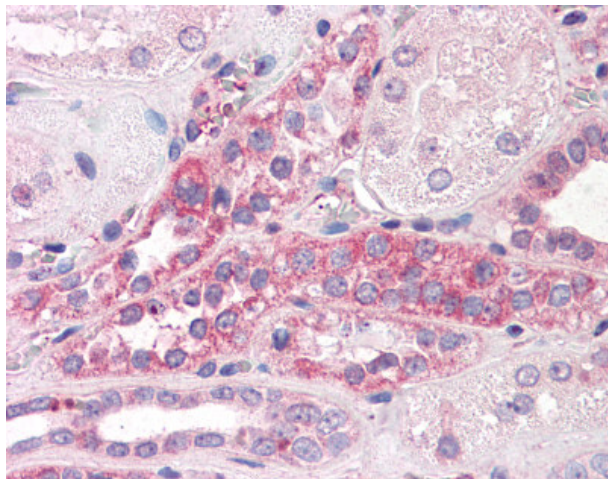
ERG28 (C14orf1) Rabbit Polyclonal Antibody

Product data:

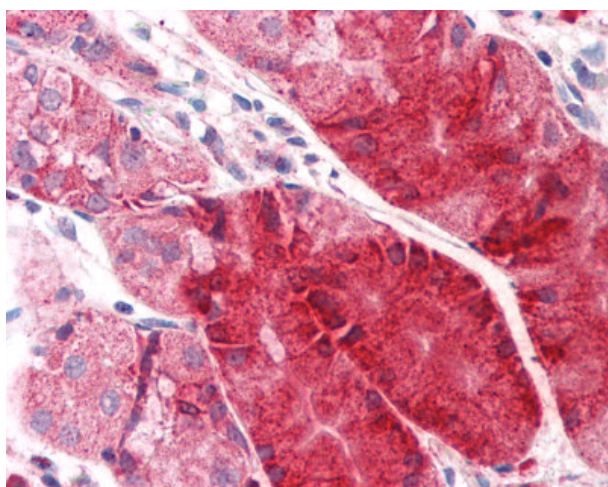
Product Type:	Primary Antibodies
Applications:	IHC
Recommended Dilution:	IHC-P (10 - 15 µg/ml)
Reactivity:	Bat, Chimpanzee, Gorilla, Human, Monkey, Rabbit, Gibbon, Guinea Pig (Predicted: Mouse, Rat, Horse)
Host:	Rabbit
Isotype:	IgG
Clonality:	Polyclonal
Immunogen:	C14orf1 antibody was raised against synthetic 15 amino acid peptide from C-Terminus of human C14orf1. Percent identity with other species by BLAST analysis: Human, Chimpanzee, Gorilla, Gibbon, Monkey, Marmoset, Elephant, Panda, Bat, Rabbit, Guinea pig (100%); Galago, Mouse, Rat, Horse (93%); Platypus (87%); Dog, Bovine, Pig (80%).
Formulation:	PBS, 0.1% sodium azide.
Concentration:	lot specific
Purification:	Immunoaffinity Chromatography
Conjugation:	Unconjugated
Storage:	Store at -20°C as received.
Stability:	Stable for 12 months from date of receipt.
Gene Name:	chromosome 14 open reading frame 1
Database Link:	NP_009107 Entrez Gene 58520 MouseEntrez Gene 299207 RatEntrez Gene 702988 MonkeyEntrez Gene 11161 Human Q9UKR5
Synonyms:	ERG28; NET51
Note:	Specific for Human C14orf1. BLAST analysis of the peptide immunogen showed no homology with other human proteins, except C14orf1 (100%), CCNB2 (53%).
Protein Families:	Transmembrane



[View online »](#)

Product images:

Anti-C14orf1 antibody IHC of human kidney. Immunohistochemistry of formalin-fixed, paraffin-embedded tissue after heat-induced antigen retrieval.



Anti-C14orf1 antibody IHC of human stomach. Immunohistochemistry of formalin-fixed, paraffin-embedded tissue after heat-induced antigen retrieval.