

## Product datasheet for **TA316576**

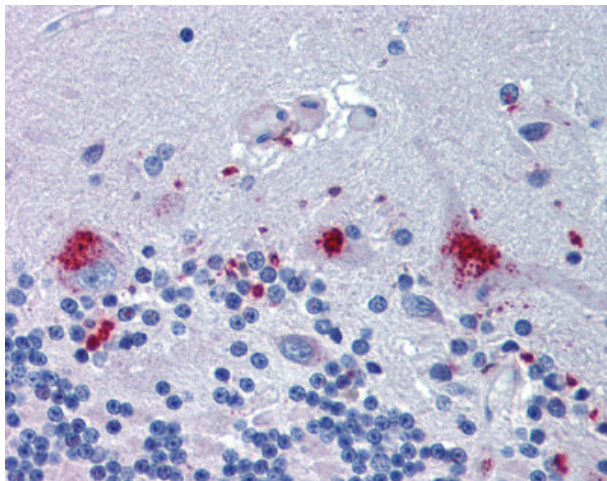
### ERG28 (C14orf1) Rabbit Polyclonal Antibody

#### Product data:

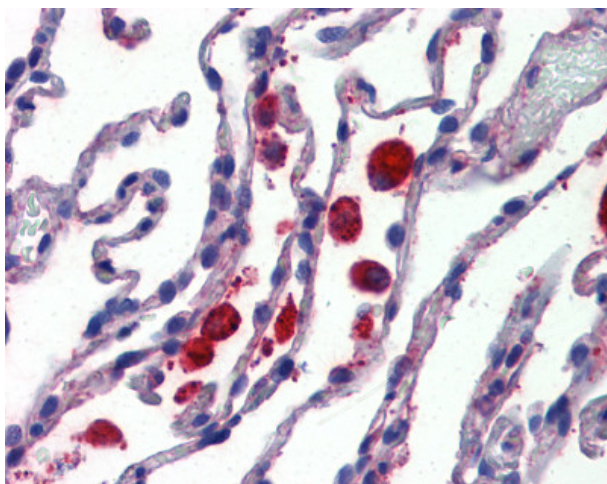
Product Type:	Primary Antibodies
Applications:	IHC
Recommended Dilution:	IHC-P (5 - 7.5 µg/ml)
Reactivity:	Bat, Bovine, Chimpanzee, Dog, Gorilla, Human, Monkey, Mouse, Pig, Rabbit, Rat, Gibbon, Hamster (Predicted: Horse, Guinea Pig)
Host:	Rabbit
Isotype:	IgG
Clonality:	Polyclonal
Immunogen:	C14orf1 antibody was raised against synthetic 12 amino acid peptide from internal region of human C14orf1. Percent identity with other species by BLAST analysis: Human, Chimpanzee, Gorilla, Gibbon, Monkey, Galago, Marmoset, Mouse, Rat, Hamster, Elephant, Panda, Dog, Bat, Bovine, Rabbit, Pig, Opossum, Platypus (100%); Horse, Guinea pig (92%); Salmon, Smelt, Stickleback, Medaka, Pufferfish (83%).
Formulation:	PBS, 0.1% sodium azide.
Concentration:	lot specific
Purification:	Immunoaffinity Chromatography
Conjugation:	Unconjugated
Storage:	Store at -20°C as received.
Stability:	Stable for 12 months from date of receipt.
Gene Name:	chromosome 14 open reading frame 1
Database Link:	<a href="#">NP_009107</a> <a href="#">Entrez Gene 58520 Mouse</a> <a href="#">Entrez Gene 299207 Rat</a> <a href="#">Entrez Gene 611962 Dog</a> <a href="#">Entrez Gene 702988 Monkey</a> <a href="#">Entrez Gene 11161 Human</a> <a href="#">Q9UKR5</a>
Synonyms:	ERG28; NET51
Note:	Specific for Human C14orf1. BLAST analysis of the peptide immunogen showed no homology with other human proteins, except C14orf1 (100%).
Protein Families:	Transmembrane



[View online »](#)

**Product images:**

Anti-C14orf1 antibody IHC of human brain, cerebellum. Immunohistochemistry of formalin-fixed, paraffin-embedded tissue after heat-induced antigen retrieval.



Anti-C14orf1 antibody IHC of human lung. Immunohistochemistry of formalin-fixed, paraffin-embedded tissue after heat-induced antigen retrieval.