

Product datasheet for **TA316566**

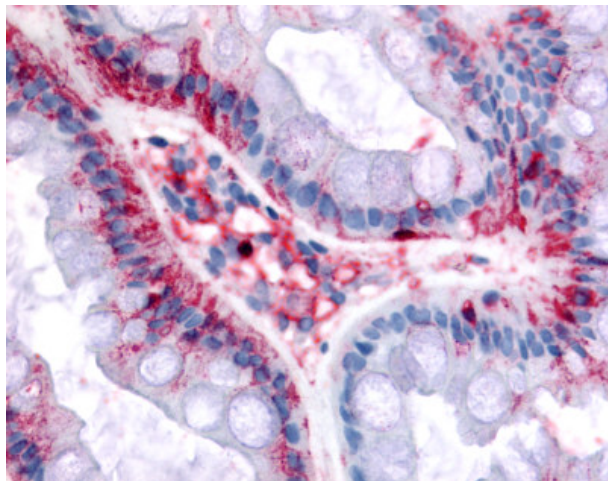
BEST4 Rabbit Polyclonal Antibody

Product data:

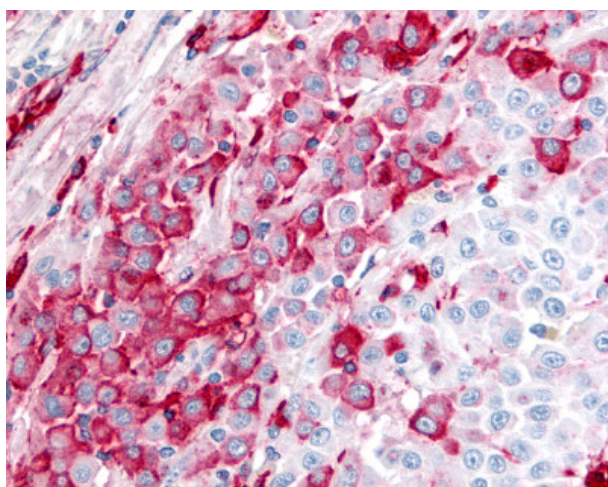
Product Type:	Primary Antibodies
Applications:	IHC
Recommended Dilution:	IHC-P (2.5 µg/ml)
Reactivity:	Bat, Bovine, Gorilla, Human, Pig, Rabbit, Gibbon (Predicted: Monkey, Rat, Horse)
Host:	Rabbit
Isotype:	IgG
Clonality:	Polyclonal
Immunogen:	BEST4 antibody was raised against synthetic 18 amino acid peptide from internal region of human BEST4. Percent identity with other species by BLAST analysis: Human, Gorilla, Gibbon, Monkey, Bovine, Bat, Rabbit, Pig (100%); Marmoset, Rat, Horse (94%); Dog (89%); Panda, Lizard (83%).
Formulation:	PBS, 0.1% sodium azide.
Concentration:	lot specific
Purification:	Immunoaffinity Chromatography
Conjugation:	Unconjugated
Storage:	Store at -20°C as received.
Stability:	Stable for 12 months from date of receipt.
Gene Name:	bestrophin 4
Database Link:	NP_695006 Entrez Gene 689103 Rat Entrez Gene 703847 Monkey Entrez Gene 266675 Human Q8NFU0
Synonyms:	VMD2L2
Note:	Specific for Human BEST4. BLAST analysis of the peptide immunogen showed no homology with other human proteins.
Protein Families:	Ion Channels: Other, Transmembrane



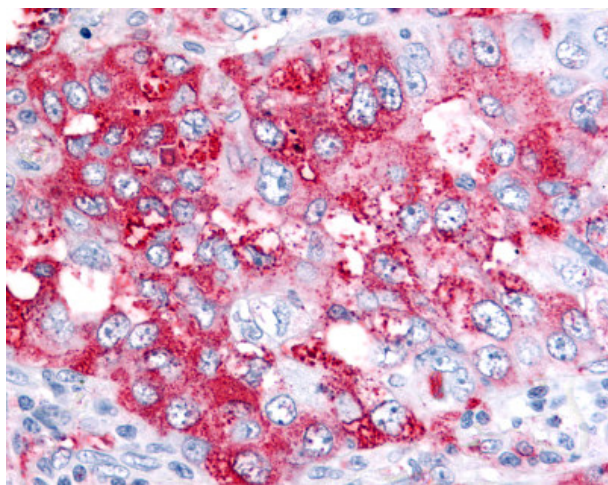
[View online »](#)

Product images:

Anti-BEST4 antibody IHC of human colon. Immunohistochemistry of formalin-fixed, paraffin-embedded tissue after heat-induced antigen retrieval.



Anti-BEST4 antibody IHC of human Skin, Melanoma. Immunohistochemistry of formalin-fixed, paraffin-embedded tissue after heat-induced antigen retrieval.



Anti-BEST4 antibody IHC of human Lung, Non-Small Cell Carcinoma. Immunohistochemistry of formalin-fixed, paraffin-embedded tissue after heat-induced antigen retrieval.