

Product datasheet for **TA316565**

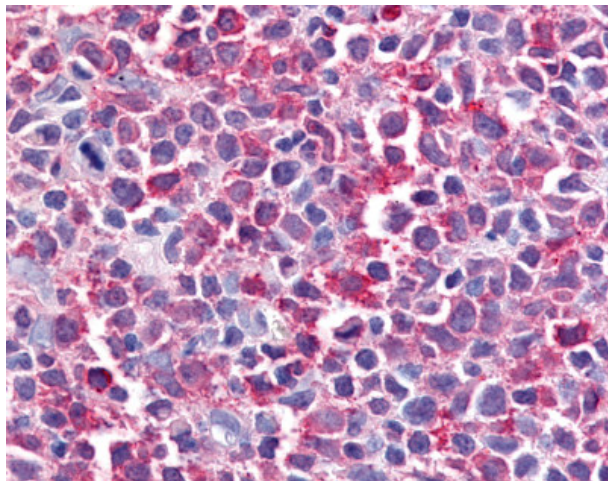
Bestrophin 2 (BEST2) Rabbit Polyclonal Antibody

Product data:

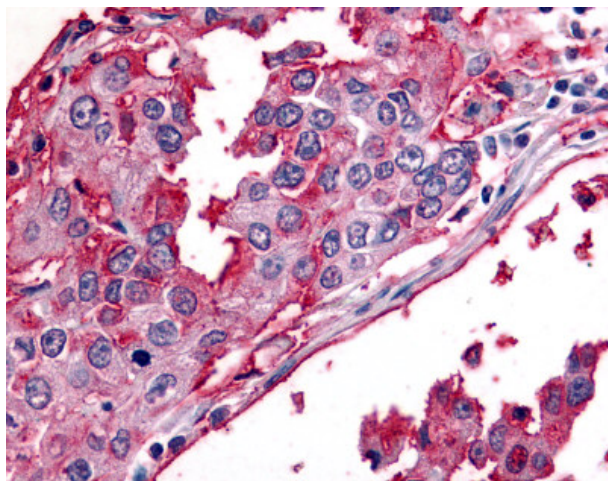
Product Type:	Primary Antibodies
Applications:	IHC
Recommended Dilution:	IHC-P (2.5 - 5 µg/ml)
Reactivity:	Dog, Gorilla, Human, Monkey (Predicted: Mouse, Bovine, Hamster)
Host:	Rabbit
Isotype:	IgG
Clonality:	Polyclonal
Immunogen:	BEST2 / Bestrophin-2 antibody was raised against synthetic 15 amino acid peptide from internal region of human BEST2 / Bestrophin-2. Percent identity with other species by BLAST analysis: Human, Gorilla, Monkey, Marmoset, Dog (100%); Mouse, Hamster, Panda, Bovine (93%); Opossum (87%); Elephant, Pig (80%).
Formulation:	PBS, 0.1% sodium azide.
Concentration:	lot specific
Purification:	Immunoaffinity Chromatography
Conjugation:	Unconjugated
Storage:	Store at -20°C as received.
Stability:	Stable for 12 months from date of receipt.
Gene Name:	bestrophin 2
Database Link:	NP_060152 Entrez Gene 212989 Mouse Entrez Gene 100856525 Dog Entrez Gene 716545 Monkey Entrez Gene 54831 Human Q8NFU1
Synonyms:	VMD2L1
Note:	Specific for Human BEST2 / Bestrophin-2. BLAST analysis of the peptide immunogen showed no homology with other human proteins, except BEST1 (47%).
Protein Families:	Transmembrane



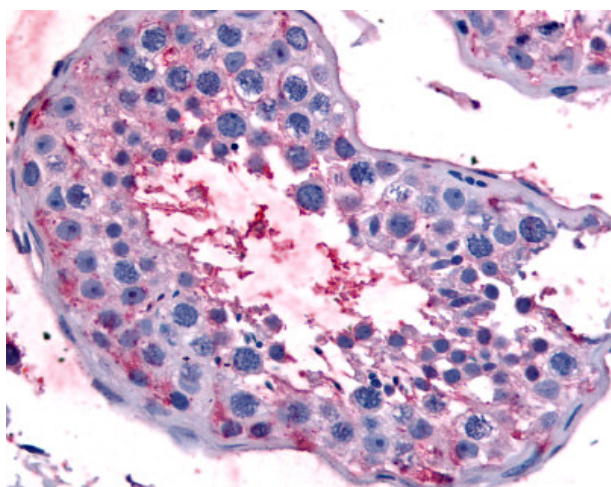
[View online »](#)

Product images:

Anti-BEST2 / Bestrophin-2 antibody IHC of human Lymph Node, Non-Hodgkins Lymphoma. Immunohistochemistry of formalin-fixed, paraffin-embedded tissue after heat-induced antigen retrieval.



Anti-BEST2 / Bestrophin-2 antibody IHC of human Lung, Non-Small Cell Carcinoma. Immunohistochemistry of formalin-fixed, paraffin-embedded tissue after heat-induced antigen retrieval.



Anti-BEST2 / Bestrophin-2 antibody IHC of human testis. Immunohistochemistry of formalin-fixed, paraffin-embedded tissue after heat-induced antigen retrieval.