

Product datasheet for **TA316564**

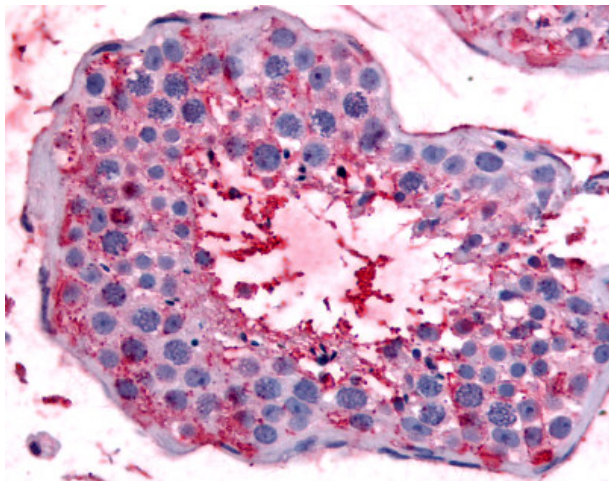
Bestrophin 2 (BEST2) Rabbit Polyclonal Antibody

Product data:

Product Type:	Primary Antibodies
Applications:	IHC
Recommended Dilution:	IHC-P (2.5 - 5 µg/ml)
Reactivity:	Bovine, Gorilla, Human, Monkey, Mouse, Pig, Rat, Gibbon, Hamster (Predicted: Bat, Dog, Rabbit)
Host:	Rabbit
Isotype:	IgG
Clonality:	Polyclonal
Immunogen:	BEST2 / Bestrophin-2 antibody was raised against synthetic 17 amino acid peptide from internal region of human BEST2 / Bestrophin-2. Percent identity with other species by BLAST analysis: Human, Gorilla, Gibbon, Monkey, Mouse, Rat, Hamster, Bovine, Pig (100%); Panda, Dog, Bat, Rabbit, Opossum (94%); Marmoset (88%).
Formulation:	PBS, 0.1% sodium azide.
Concentration:	lot specific
Purification:	Immunoaffinity Chromatography
Conjugation:	Unconjugated
Storage:	Store at -20°C as received.
Stability:	Stable for 12 months from date of receipt.
Gene Name:	bestrophin 2
Database Link:	NP_060152 Entrez Gene 212989 MouseEntrez Gene 364973 RatEntrez Gene 100856525 DogEntrez Gene 716545 MonkeyEntrez Gene 54831 Human Q8NFU1
Synonyms:	VMD2L1
Note:	Specific for Human BEST2 / Bestrophin-2. BLAST analysis of the peptide immunogen showed no homology with other human proteins, except BEST3 (59%).
Protein Families:	Transmembrane



[View online »](#)

Product images:

Anti-BEST2 / Bestrophin-2 antibody IHC of human testis. Immunohistochemistry of formalin-fixed, paraffin-embedded tissue after heat-induced antigen retrieval.