

Product datasheet for **TA316562**

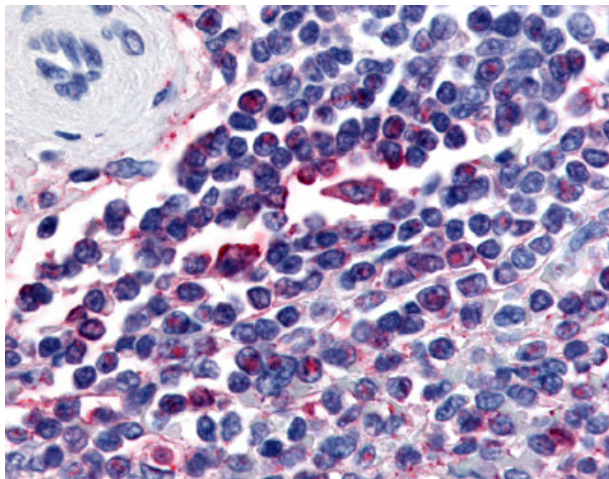
Attractin (ATRN) Rabbit Polyclonal Antibody

Product data:

Product Type:	Primary Antibodies
Applications:	IHC
Recommended Dilution:	IHC-P (20 µg/ml)
Reactivity:	Gorilla, Human
Host:	Rabbit
Isotype:	IgG
Clonality:	Polyclonal
Immunogen:	ATRN / Attractin antibody was raised against synthetic 16 amino acid peptide from internal region of human ATRN / Attractin. Percent identity with other species by BLAST analysis: Human, Gorilla (100%); Gibbon (94%); Monkey, Bovine, Pig (88%); Marmoset, Rat, Bat, Hamster (81%).
Formulation:	PBS, 0.1% sodium azide.
Concentration:	lot specific
Purification:	Immunoaffinity Chromatography
Conjugation:	Unconjugated
Storage:	Store at -20°C as received.
Stability:	Stable for 12 months from date of receipt.
Gene Name:	attractin
Database Link:	NP_036202 Entrez Gene 8455 Human O75882
Synonyms:	attractin; attractin-2; DPPT-L; KIAA0548; mahogany protein; MGC126754; MGCA; OTTHUMP00000030102; OTTHUMP00000030103
Note:	Specific for Human ATRN / Attractin. BLAST analysis of the peptide immunogen showed no homology with other human proteins, except KCTD19 (50%).
Protein Families:	Druggable Genome, Secreted Protein, Transmembrane



[View online »](#)

Product images:

Anti-ATRN / Attractin antibody IHC of human spleen. Immunohistochemistry of formalin-fixed, paraffin-embedded tissue after heat-induced antigen retrieval.