

Product datasheet for **TA316561**

Attractin (ATRN) Rabbit Polyclonal Antibody

Product data:

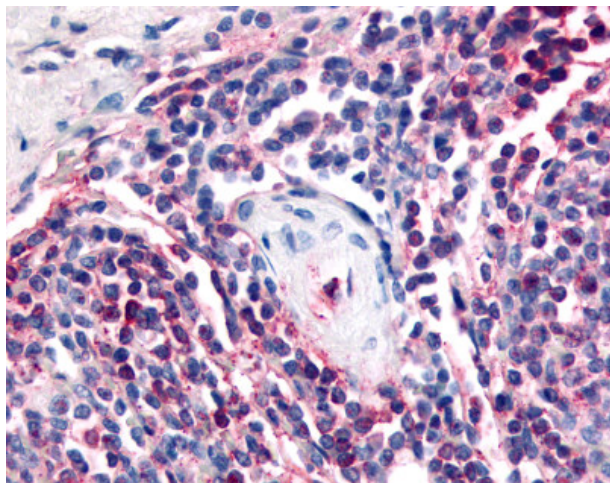
Product Type:	Primary Antibodies
Applications:	IHC
Recommended Dilution:	IHC-P (10 µg/ml)
Reactivity:	Bat, Bovine, Dog, Gorilla, Human, Monkey, Mouse, Pig, Rabbit, Rat, Zebrafish, Gibbon, Hamster, Horse (Predicted: Chicken, Xenopus)
Host:	Rabbit
Isotype:	IgG
Clonality:	Polyclonal
Immunogen:	ATRN / Attractin antibody was raised against synthetic 17 amino acid peptide from internal region of human ATRN / Attractin. Percent identity with other species by BLAST analysis: Human, Gorilla, Gibbon, Monkey, Marmoset, Mouse, Rat, Hamster, Elephant, Panda, Dog, Bat, Bovine, Horse, Rabbit, Pig, Zebrafish (100%); Opossum, Turkey, Chicken, Platypus, Xenopus (94%); Stickleback (88%).
Formulation:	PBS, 0.1% sodium azide.
Concentration:	lot specific
Purification:	Immunoaffinity Chromatography
Conjugation:	Unconjugated
Storage:	Store at -20°C as received.
Stability:	Stable for 12 months from date of receipt.
Gene Name:	attractin
Database Link:	NP_036202 Entrez Gene 11990 Mouse Entrez Gene 83526 Rat Entrez Gene 477170 Dog Entrez Gene 717374 Monkey Entrez Gene 8455 Human O75882
Synonyms:	attractin; attractin-2; DPPT-L; KIAA0548; mahogany protein; MGC126754; MGCA; OTTHUMP00000030102; OTTHUMP00000030103
Note:	Specific for Human ATRN / Attractin. BLAST analysis of the peptide immunogen showed no homology with other human proteins.



[View online »](#)

Protein Families: Druggable Genome, Secreted Protein, Transmembrane

Product images:



Anti-ATRN / Attractin antibody IHC of human spleen. Immunohistochemistry of formalin-fixed, paraffin-embedded tissue after heat-induced antigen retrieval.