

Product datasheet for **TA316517**

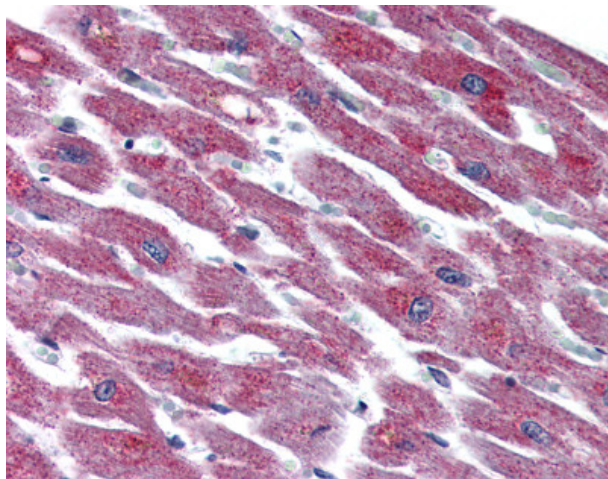
PACAP receptor (ADCYAP1R1) Rabbit Polyclonal Antibody

Product data:

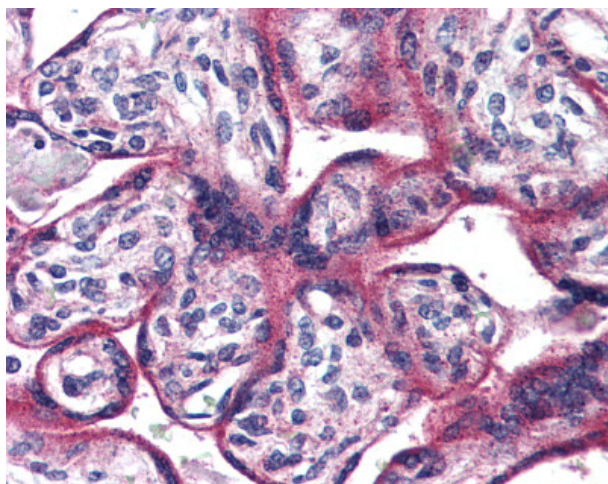
Product Type:	Primary Antibodies
Applications:	IHC
Recommended Dilution:	IHC-P (5 - 7 µg/ml)
Reactivity:	Gorilla, Human, Monkey, Gibbon
Host:	Rabbit
Isotype:	IgG
Clonality:	Polyclonal
Immunogen:	ADCYAP1R1 / PAC1 Receptor antibody was raised against synthetic 18 amino acid peptide from N-terminal extracellular domain of human ADCYAP1R1. Percent identity with other species by BLAST analysis: Human, Gorilla, Gibbon, Monkey, Marmoset (100%); Elephant, Panda, Horse, Pig (89%); Bovine (83%).
Formulation:	PBS, 0.1% sodium azide.
Concentration:	lot specific
Purification:	Immunoaffinity Chromatography
Conjugation:	Unconjugated
Storage:	Store at -20°C as received.
Stability:	Stable for 12 months from date of receipt.
Gene Name:	ADCYAP receptor type I
Database Link:	NP_001109 Entrez Gene 695483 Monkey Entrez Gene 117 Human P41586
Synonyms:	PAC1; PAC1R; PACAPR; PACAPRI
Note:	Specific for Human ADCYAP1R1. BLAST analysis of the peptide immunogen showed no homology with other human proteins.
Protein Families:	Druggable Genome, GPCR, Transmembrane
Protein Pathways:	Neuroactive ligand-receptor interaction



[View online »](#)

Product images:

Anti-ADCYAP1R1 antibody IHC of human heart. Immunohistochemistry of formalin-fixed, paraffin-embedded tissue after heat-induced antigen retrieval.



Anti-ADCYAP1R1 antibody IHC of human placenta. Immunohistochemistry of formalin-fixed, paraffin-embedded tissue after heat-induced antigen retrieval.