

Product datasheet for **TA316505**

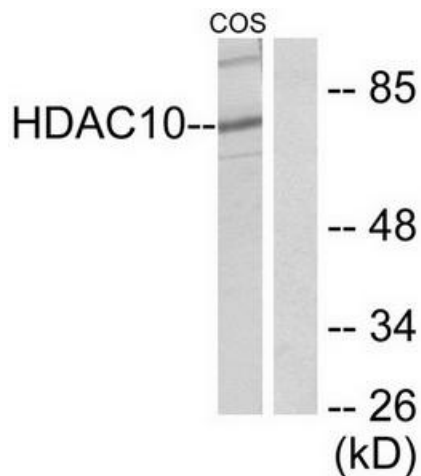
HDAC10 Rabbit Polyclonal Antibody

Product data:

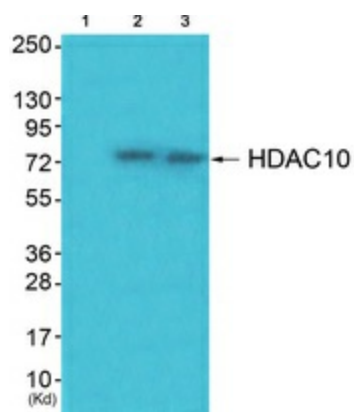
Product Type:	Primary Antibodies
Applications:	IHC, WB
Recommended Dilution:	WB: 1:500~1:3000, IHC: 1:50~1:100, ELISA: 1:5000
Reactivity:	Human, Mouse, Rat
Host:	Rabbit
Isotype:	IgG
Clonality:	Polyclonal
Immunogen:	The antiserum was produced against synthesized peptide derived from human HDAC10.
Formulation:	Rabbit IgG in phosphate buffered saline (without Mg ²⁺ and Ca ²⁺), pH 7.4, 150mM NaCl, 0.02% sodium azide and 50% glycerol.
Concentration:	lot specific
Purification:	The antibody was affinity-purified from rabbit antiserum by affinity-chromatography using epitope-specific immunogen.
Conjugation:	Unconjugated
Storage:	Store at -20°C as received.
Stability:	Stable for 12 months from date of receipt.
Gene Name:	histone deacetylase 10
Database Link:	NP_114408 Entrez Gene 170787 MouseEntrez Gene 362981 RatEntrez Gene 83933 Human Q969S8
Synonyms:	HD10
Note:	HDAC10 antibody detects endogenous levels of total HDAC10 protein.
Protein Families:	Druggable Genome, Transcription Factors



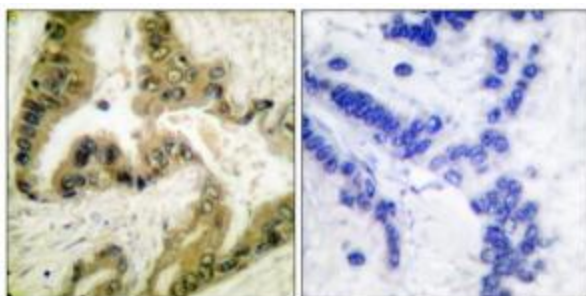
[View online »](#)

Product images:


Western blot analysis of extracts from COS7 cells, using HDAC10 antibody. The lane on the right is treated with the synthesized peptide.



Western blot analysis of extracts from JK cells (Lane 2) and cos-7 cells (Lane 3), using HDAC10 Antibody. The lane on the left is treated with synthesized peptide.



Immunohistochemical analysis of paraffin-embedded human lung carcinoma tissue using HDAC10 antibody. The picture on the right is treated with the synthesized peptide.